

ACKNOWLEDGMENTS

Evaluation of Head Start
Family Child Care Demonstration

Prepared for:

Louisa B. Tarullo, Ed.D.
Commissioner's Office of Research and Evaluation
Administration on Children, Youth, and Families
Department of Health and Human Services
Washington, D.C.

Prepared by:

RMC Research Corporation
Bonnie J. Faddis, Ph.D., Project Director
Paul Ahrens-Gray
Portland, Oregon

With

Elisa L. Klein, Ph.D.
Associate Professor, Human Development
University of Maryland

Special thanks to:

Participating program staff, parents and children
Robert Bradley, Ph.D., University of Arkansas
Trellis Waxler, Head Start Bureau

Contents

Exhibits.....	v
Executive Summary.....	xi
Program Implementation Characteristics	xii
Child and Family Background Characteristics.....	xiv
Characteristics of Family Child Care Providers and Center Classroom Teachers	xv
Implementation of Head Start Program Performance Standards.....	xvi
Characteristics of Program Structure.....	xvii
Characteristics of Program Dynamics	xvii
Child Cognitive Outcomes	xviii
Child Social-Emotional Outcomes.....	xix
Child Physical Outcomes.....	xix
Parent Outcomes.....	xix
Kindergarten Follow Up	xx
Policy Implications	xxi
I. Introduction.....	1
Background and Rationale for Family Child Care Services in Head Start	1
The Evaluation of the Head Start Family Child Care Homes Demonstration.....	3
Overview of Evaluation Findings	4
Framing the Issues in Alternative Delivery of Head Start Services	5
Head Start.....	5
Child Care	7
Family Child Care	8
II. Evaluation Design and Demonstration Site Characteristics	9
Purpose of the Evaluation	10
Recruitment and Random Assignment.....	12
Recruitment Methods.....	13
Random Assignment	14
The Number Recruited and Enrolled.....	15
Attrition	19
Barriers to Recruitment and Enrollment	22
Agency Characteristics.....	23
Years in Operation	24
Agency Size and Type.....	24
Community Description	25
Race/Ethnicity	25
Family Child Care Program Characteristics.....	26
Geographic Distribution of Family Child Care Homes	27
Family Child Care Provider Employment Terms	27
Service Provision Schedules and Adaptations	29

Cost of Providing Family Child Care Services.....	31
III. Data Collection Instruments	35
Criteria for Selecting Measures.....	35
Child and Family Background Information	38
Family Data Interview	38
Parent Perceptions of Head Start Services	39
Family Routines Inventory Modified.....	40
Family Resource Scale.....	40
Parenting Dimensions Inventory.....	41
Significant Life Events Checklist.....	41
Program Comprehensiveness and Quality.....	42
Head Start On-Site Program Review Instrument (OSPRI)	42
Developmental Practices Inventory	44
Arnett Scale of Caregiver Behavior	45
Agency Staff Questionnaire	45
Caregiver Characteristics Form	46
Child Outcome Measures	46
Cognitive Functioning.....	47
Social Functioning	47
Physical Functioning.....	48
Instrument Selection.....	48
The Peabody Picture Vocabulary Test Revised.....	49
Daberon 2	50
Concepts About Print	50
Child Observation Record.....	51
Child Adaptive Behavior Inventory Modified.....	52
Kindergarten Teacher Interview	52
IV. Program Quality	53
Head Start Program Performance Standards.....	53
Types of Items: Records, Observations, and Interviews	53
Ability of Family Child Care Homes and Center Classrooms to Meet Head Start Program Performance Standards	55
Caregiver Characteristics	57
Gender	57
Age.....	58
Race	58
Primary Language	58
Education.....	59
Coursework and Training in Early Childhood Education	60
Experience in Child Care.....	61
Experience in Head Start Settings.....	62
Family Child Care Provider Compensation and Benefits.....	62
Absenteeism	63
Turnover.....	63

Program Structure.....	64
Child/Staff Ratio	64
Group Size	64
Providing Care for Other Children.....	66
Scheduling, Planning, and Organization.....	67
Curricular Materials and Equipment	69
Arrangement of Materials	70
Furniture and Equipment.....	70
Safety.....	70
Program Dynamics.....	73
Curricular and Learning Activities.....	74
Learning Approach.....	75
Atmosphere	76
Displays.....	77
Teaching Methods and Developmentally Appropriate Practices	77
Adult-Child Interactions	79
Relationships Among Measures of Program Quality	82
Meal Times	83
Race and Language Diversity.....	84
V. Child Outcomes	87
Child Background Characteristics	87
Language	87
Race/Ethnicity	87
Special Needs	88
Child Care Experiences	89
Child Outcomes During the Head Start Year	91
Data Analytic Approach	91
Cognitive Outcomes	93
Social-Emotional Outcomes.....	101
Physical Outcomes	103
Summary Across Outcome Domains	106
Kindergarten Follow Up	107
Kindergarten Teacher Questionnaire	107
Parent Involvement	108
Child Outcomes During Kindergarten.....	109
Child Outcome Trend Analysis.....	116
VI. Parent Outcomes.....	123
Family Characteristics.....	123
Family Structure.....	123
Family Income	124
Public Assistance	125
Race and Language of Primary Caregivers.....	125
Education.....	125
Health	126

Parent Involvement	127
Setting Preference and Satisfaction	128
Relative Advantages of Family Child Care Homes and Center Classrooms.....	128
Importance of Child Care Attributes.....	130
Parent Participation	131
Parent Involvement with Head Start Program Activities.....	134
Other parent involvement indicators	134
Parent Self-Sufficiency	135
Parenting Skills.....	137
Summary of Parent Findings.....	140
Summary	143
References.....	147

Exhibits

Exhibit II-1	Locations of Head Start Family Child Care Demonstration Sites.....	9
Exhibit II-2	Key Indicators in the Evaluation Framework.....	12
Exhibit II-3	Evaluation Design	12
Exhibit II-4	Recruitment Strategies	14
Exhibit II-5	Number of Head Start Family Child Care Children Recruited, Enrolled, and Retained in Cohort 2	17
Exhibit II-6	Numbers of FCC Homes and Center Classrooms by Agency for Cohorts 1 and 2.....	18
Exhibit II-7	Cohort 2: Number of Children Withdrawn by Reason as Reported by Agency.....	21
Exhibit II-8	Barriers to Enrolling Families as Reported by Agencies.....	22
Exhibit II-9	Summary of Agency Characteristics During Demonstration Project Implementation.....	25
Exhibit II-10	Percentage of Children by Race in Demonstration Project Compared to Agency and National Data.....	26
Exhibit II-11	Hours of Care Used in Family Child Care Homes.....	30
Exhibit II-12	Program Design Adaptations Made by Family Child Care Homes.....	31
Exhibit II-13	Cost for Family Child Care Services per Child by Agency.....	33
Exhibit III-1	Overview of Domains and Instruments	36
Exhibit III-2	Summary of Data Collection Instruments and Participants.....	37
Exhibit III-3	Parent Interview Components.....	38
Exhibit III-4	Elements of the Family Data Interview	39
Exhibit III-5	Data Collection Plan for Assessing Program Comprehensiveness and Quality.....	42
Exhibit III-6	Number of OSPRI Items by Data Collection Method.....	44

Exhibit III-7	Data Collection Plan for Child Outcome Measures	49
Exhibit IV-1	Mean Number and Percentage of OSPRI Items Met by FCC Homes and Center Classrooms	56
Exhibit IV-2	Personal Characteristics of Caregivers (Percentages)	59
Exhibit IV-3	Professional Characteristics of Caregivers (Percentages).....	61
Exhibit IV-4	Group Size and Child/Staff Ratio.....	65
Exhibit IV-5	Numbers of Children in Family Child Care Homes.....	66
Exhibit IV-6	Activities and Groupings in Observed Daily Schedule	68
Exhibit IV-7	Materials Available to Children.....	71
Exhibit IV-8	Percent of FCC Homes and Center Classrooms with Emergency Plans	72
Exhibit IV-9	Percent of FCC Homes and Center Classrooms Meeting OSPRI Storage, Hazards, and Outdoor Safety Items.....	73
Exhibit IV-10	Percent of FCC Homes and Center Classrooms Passing Selected OSPRI Items	74
Exhibit IV-11	Percent of FCC Homes and Center Classrooms Using Selected Learning Approaches.....	76
Exhibit IV-12	Percent of FCC Homes and Center Classrooms Passing of Atmosphere-Related OSPRI Indicators.....	76
Exhibit IV-13	Mean Scores for Family Child Care Homes and Center Classrooms on the DPI.....	78
Exhibit IV-14	Developmental Practices Inventory Total Score Posttest Means by Agency and Setting.....	79
Exhibit IV-15	Adult-Child Interactions Measured by the OSPRI.....	80
Exhibit IV-16	Arnett Scale Mean Scores for Family Child Care Homes and Center Classrooms.....	81
Exhibit IV-17	Arnett Scale Posttest Means by Agency and Setting	82
Exhibit IV-18	Correlations Between Spring Measures of Program Quality	83

Exhibit VI-17 Group Means and Significance Tests on Parent Outcomes Family
Child Care Homes and Center Classrooms..... 140

Exhibit II-2 Key Indicators in the Evaluation Framework

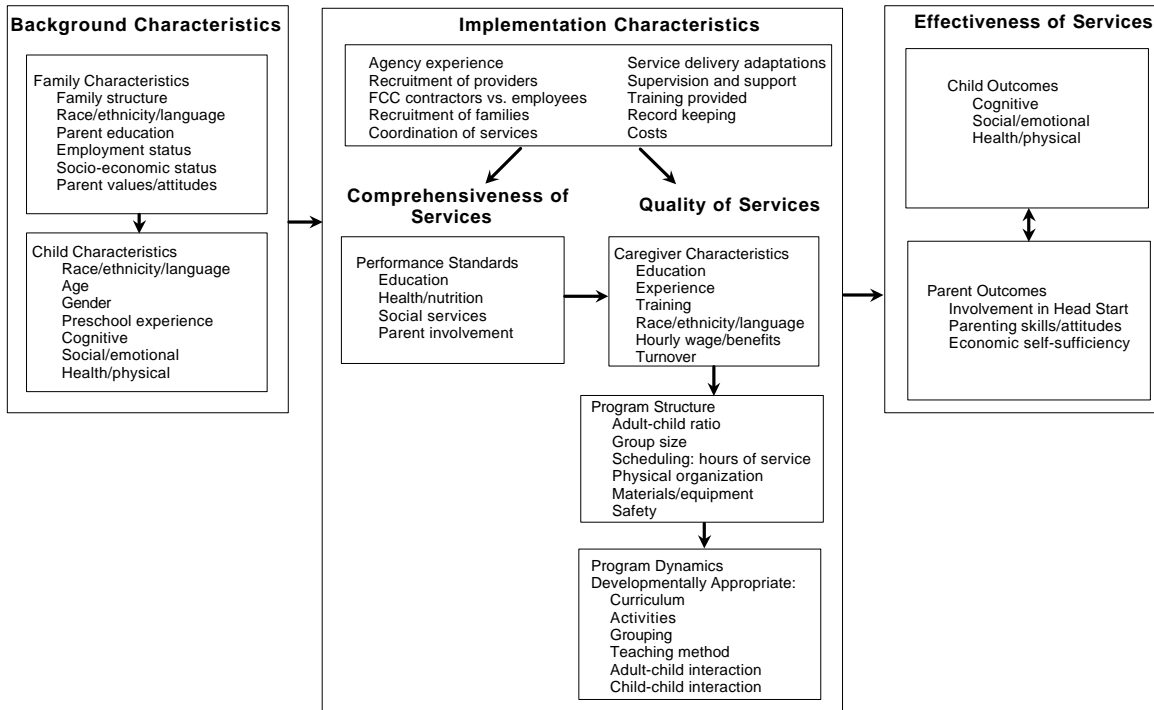


Exhibit II-3 Evaluation Design

Program Setting	Number of Children Assessed Cohort 1 (Pilot)			Number of Children Assessed Cohort 2		
	Winter 1990	Spring 1994	Spring 1995	Fall 1994	Spring 1995	Spring 1996
FCC homes	414	347	266	435	346	262
Center classrooms	470	409	300	478	399	284

Recruitment and Random Assignment

Recruitment for the family child care home demonstration projects differed from the recruitment practices typically used in Head Start agencies because of the additional requirements for family eligibility and the random assignment of eligible children to either the family child care home or a center classroom setting. Random assignment was employed to ensure equivalent background characteristics across the children in the two

