

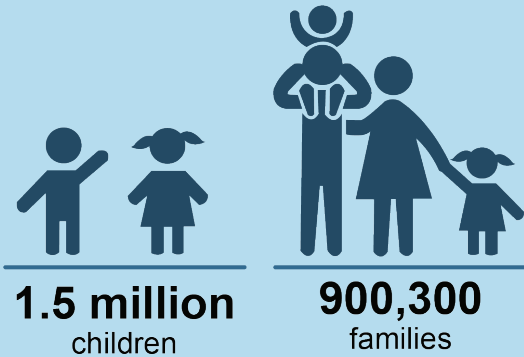
CCDF Quick Facts: FY2020 Data

[Data Source: FY2020 Preliminary ACF-801 Data](#)

CCDF child care subsidies help low-income families with children under age 13 pay for child care so that parents can work or participate in training or education activities. Parents typically receive subsidies in the form of vouchers that they can use with a provider of their choice – such as a relative, neighbor, child care center, or after-school program. States and Territories have a great deal of flexibility to establish child care subsidy policies to meet their needs.

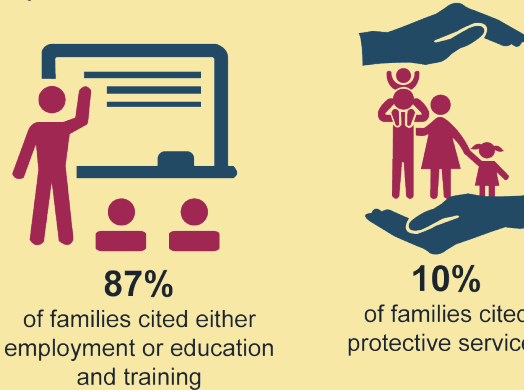
NUMBER SERVED

Approximately 1.5 million children and 900,300 families per month received child care assistance in FY 2020.



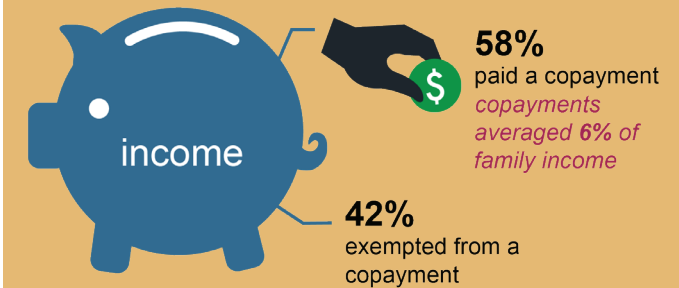
REASONS FOR CARE

In FY 2020, 87 percent of families cited either employment or education and training as the reason for needing child care. Another 10 percent cited protective services as reasons for care.



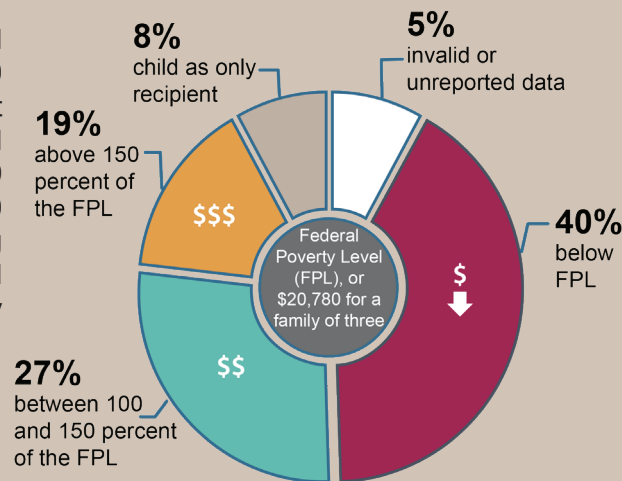
FAMILY COPAYMENTS

Of those families with reported income in FY 2020, approximately 58 percent paid a copayment; the remaining 42 percent of the families with reported income had \$0 copay. For families that were assessed a copayment, the average copayment was 6 percent of family income.



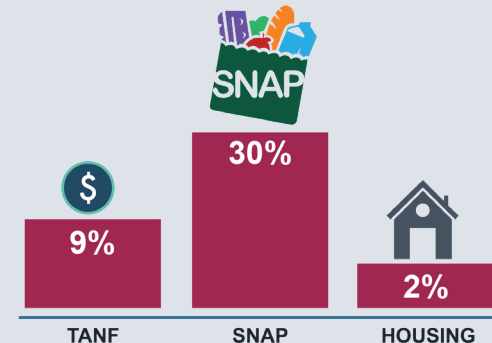
INCOME LEVEL

Of the families served in FY 2020, 40 percent were below the Federal Poverty Level (FPL), or \$21,720 for a family of three; 27 percent had incomes between 100 and 150 percent of the FPL; and 19 percent had incomes above 150 percent of the FPL. The remaining families had invalid or unreported data (5 percent), or a child as only recipient (8 percent).



OTHER SOURCES OF SUPPORT

Nationally, the average monthly percent of families reporting income from TANF was approximately 9 percent in FY 2020. Most States give first priority for child care assistance to families currently receiving, at-risk of receiving, or transitioning off TANF. CCDF families also reported income from SNAP (30 percent) and Housing (2 percent).



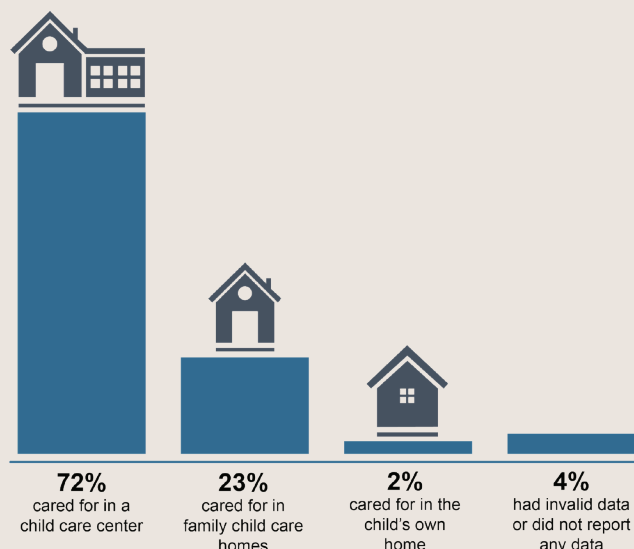
CCDF Quick Facts: FY2020 Data

[Data Source: FY2020 Preliminary ACF-801 Data](#)

Below are facts related to children receiving subsidies and the providers who serve them.

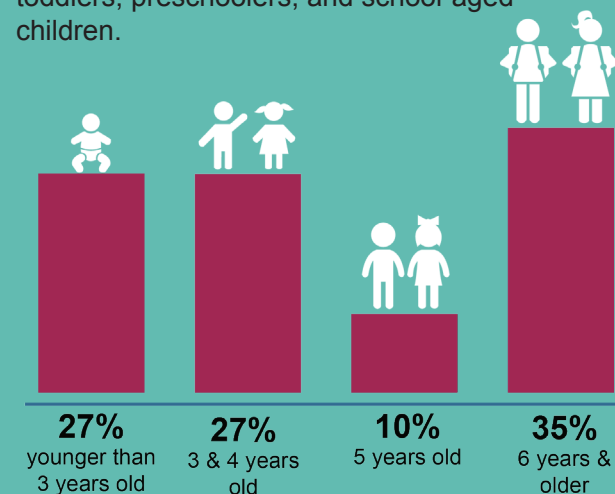
TYPE OF CARE

CCDF subsidy program emphasizes parental choice; therefore, children are cared for in a wide variety of settings. Nationally, in FY 2020:



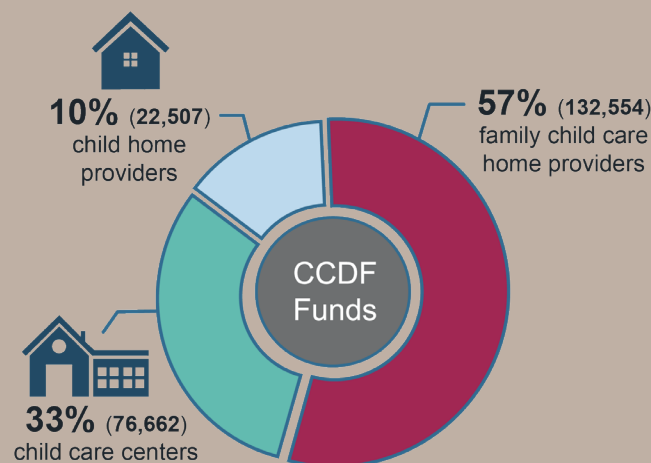
AGES OF CHILDREN

Subsidies help pay for care for infants and toddlers, preschoolers, and school-aged children.



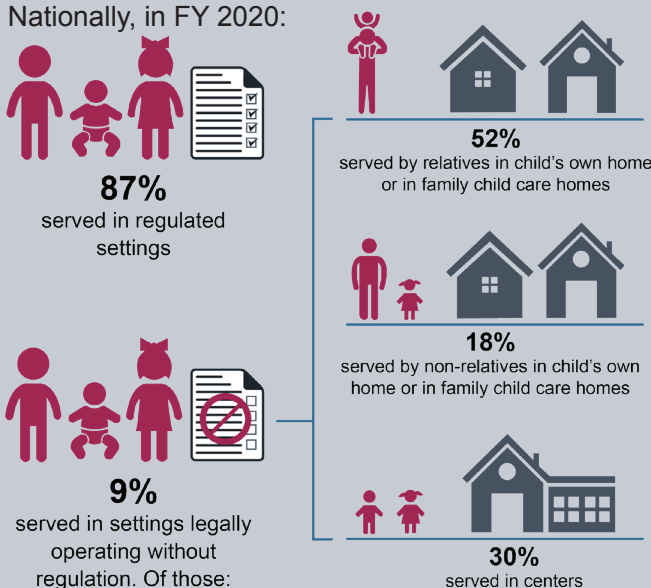
PROVIDERS RECEIVING CCDF FUNDS

Nationally, in FY 2020, 231,723 child care providers served children receiving CCDF subsidies:



REGULATED VERSUS NON-REGULATED CARE

Nationally, in FY 2020:



PROPORTION OF REGULATED PROVIDERS RECEIVING CCDF FUNDS

- For 26 States and Territories, 85 - 100 percent of providers were regulated
- For 19 States and Territories, 50 < 85 percent of their providers were regulated
- For 7 States and Territories, 25 < 50 percent of providers were regulated
- For 3 States and Territories less than 25 percent of providers were regulated

Note: at the time of the preliminary aggregation, American Samoa had not submitted data on provider type or regulation status, so that territory is not included in the counts.

