



SUPPORTING ECONOMIC DEVELOPMENT IN ENERGY COMMUNITIES



STRONGER COUNTIES. STRONGER AMERICA.

- **Advocate county priorities** in federal policymaking
- **Promote exemplary county policies** and practices
- **Nurture leadership skills** and expand knowledge networks
- **Optimize county and taxpayer resources** and cost savings, and
- **Enrich the public's understanding** of county government.

NACo Counties Futures Lab

PUBLIC HEALTH
AND
WELL-BEING



SKILLED
WORKFORCE
AND ECONOMIC
DEVELOPMENT



THE NATURAL
AND BUILT
ENVIRONMENT



BREAKING
MULTI-
GENERATIONAL
CYCLES OF
POVERTY



SMART
JUSTICE





1. About BRECC

**2. Economic Resilience
Strategies**

**3. Inspiration for your
Community**

**4. Peer Exchange: Share
Solutions in your
Community**



BUILDING RESILIENT
ECONOMIES *in*
COAL COMMUNITIES



Empower Coal Communities

to strengthen the future of their economies



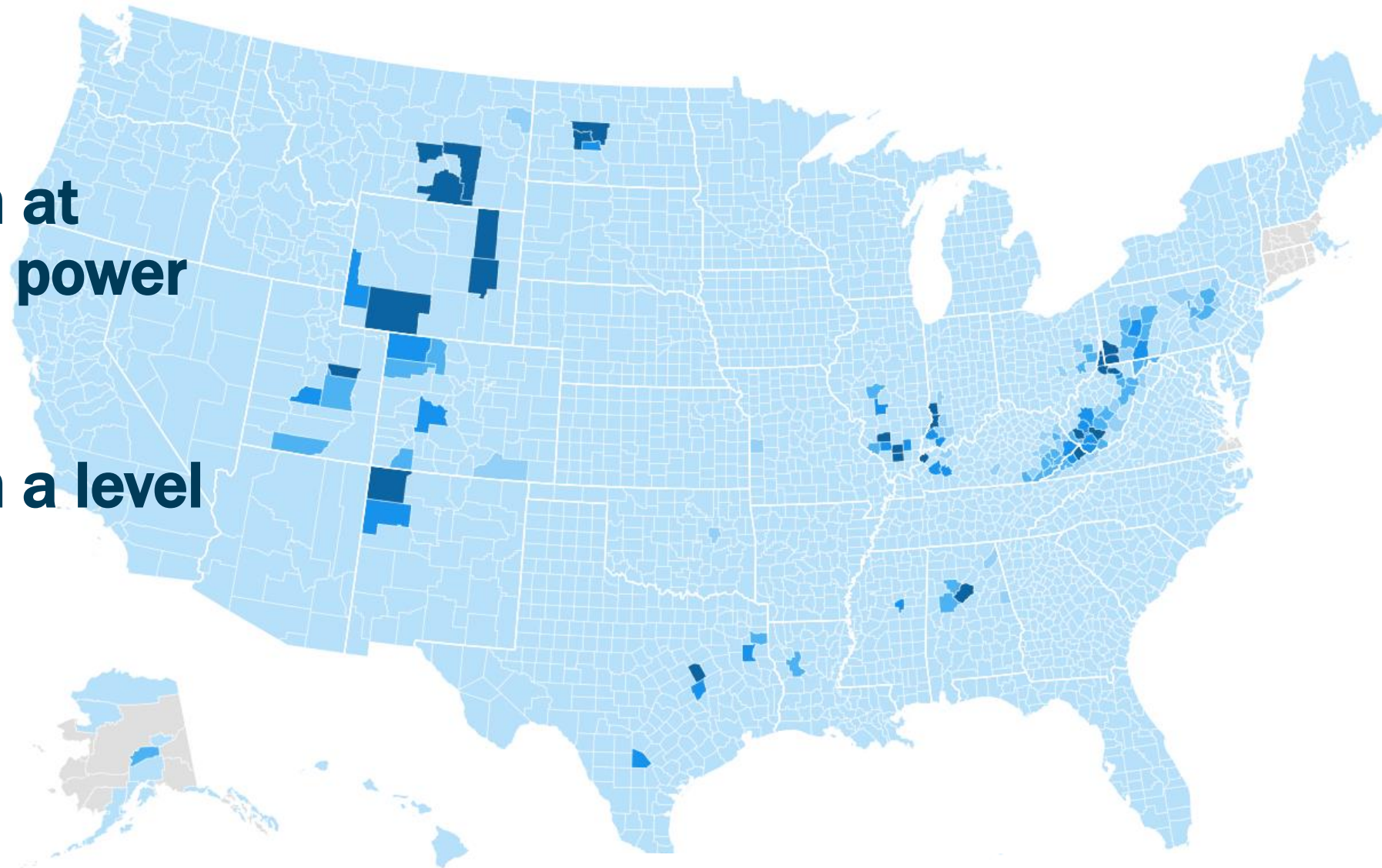
BUILDING RESILIENT
ECONOMIES *in*
COAL COMMUNITIES

2021 COAL PRODUCTION - (SHORT TONS)

Source: NACo Analysis of U.S. Energy Information Administration Data

330+ counties with at least one coal-fired power plant

150+ counties with a level of coal production



Numbers within each color box represent the distribution of counties.



The BRECC National Network

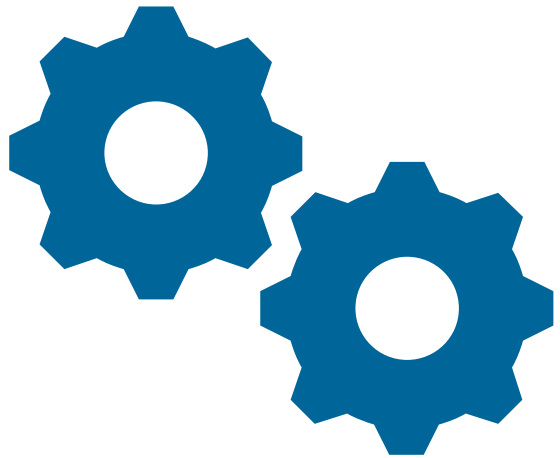
connecting coal communities



BUILDING RESILIENT
ECONOMIES *in*
COAL COMMUNITIES

The BRECC National Network

connecting coal communities



Join us for BRECC's Virtual Learning Series!

BRECC STRATEGIES: ECONOMIC DIVERSIFICATION

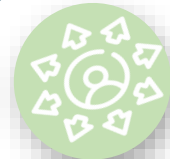
Infrastructure
Investment



Workforce
Development



Strategic
Planning



Industry
Diversification



Community
Revitalization



BRECC STRATEGIES



GOAL 1: Infrastructure Investment

- Expand broadband coverage
- Update technology, transportation, water & sewer systems
- Remediate sites
- Retrofit facilities for clean energy production

RESOURCES:

- Broadband Infrastructure Deployment Grants, NTIA
- Assistance to Coal Communities (ACC) Program, EDA
- Brownfields Assessment & Cleanup Program, EPA
- Abandoned Mine Land Economic Revitalization, OSMRE
- Energy Infrastructure Reinvestment, DOE

BRECC STRATEGIES



GOAL 2: Workforce Development

- Create new, quality jobs
- Develop training pipelines
- Retain and reskill workers

RESOURCES:

- Partnerships for Opportunity, Workforce, and Economic Revitalization (POWER) Initiative, ARC
- Workforce Opportunity for Rural Communities (WORC) Program, ETA
- Critical Sectors Job Quality Demonstration Grants, DOL
- Advanced manufacturing Apprenticeship, DOL

BRECC STRATEGIES



GOAL 3: Industry Diversification

- Attract new businesses, expand existing
- Target diverse industry growth
- Clean energy investments
- Secure supply chains

RESOURCES:

- Rural Innovation Stronger Economy Grant, USDA
- Appalachian Regional Initiative for Stronger Economies (ARISE), ARC
- Assistance to Coal Communities (ACC), EDA
- Advanced Energy Manufacturing and Recycling Grant, DOE



BRECC STRATEGIES

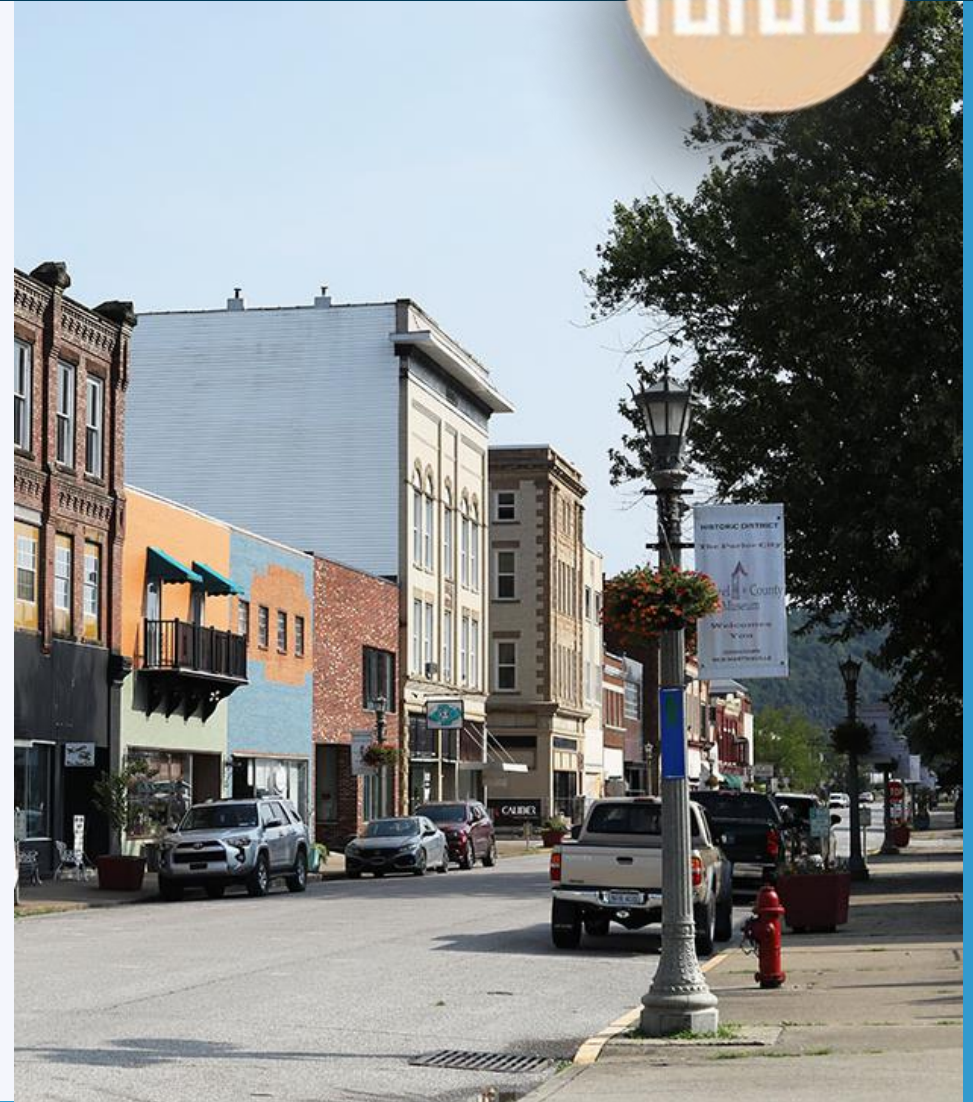


GOAL 4: Community Revitalization

- Support small businesses
- Grow entrepreneurial ecosystems
- Revitalize main streets
- Outdoor recreation

RESOURCES:

- Recreation Economy for Rural Communities Grant, EPA
- Hometown Grants, T-Mobile
- Rivers, Trail and Conservation Assistance, NPS
- Strategic Economic and Community Development, USDA
- Ag Innovation Center Program, USDA



BRECC STRATEGIES



GOAL 5: Strategic Planning

- Leverage Technical Assistance Opportunities
- Collaborate Regionally
- Create Task Teams
- Build and Sustain Project Momentum

RESOURCES:

- Building Resilient Economies in Coal Communities, NACo
- Economic Recovery Corps, IEDC
- Thriving Communities, USDOT
- Thriving Communities Technical Assistance Centers (TC TAC), EPA
- Ag Innovation Center Program, USDA



Building Resilient Economies in Coal Communities

Economic Diversification Strategy

Counties of Apache, Coconino and Navajo, Ariz.



BUILDING RESILIENT
ECONOMIES *in*
COAL COMMUNITIES

ECONOMIC DIVERSIFICATION



**Strategic
Planning**



**Asset-based
Industry
Expansion**



“We are taking this strategy of looking at a macro view and helping every small and medium project get on base”

- Corey Ringenberg, Coconino County, Ariz.



Strategic Planning



1

EXECUTED BRECC ECONOMIC DIVERSIFICATION STRATEGY

2

DEVELOPED "GET ON BASE" STRATEGY ACROSS 3-COUNTY REGION

3

PARTNERED WITH ENERGY COMMUNITIES IWG RAPID RESPONSE TEAM



Asset-based Industry Development



1

REPURPOSED POWER PLANT INTO
MODULAR HOME MANUFACTURING
FACILITY

2

ESTABLISHED A BIOECONOMY
DEVELOPMENT OPPORTUNITY ZONE

An aerial photograph of a coal community in West Virginia, surrounded by dense forests with vibrant autumn foliage in shades of orange, yellow, and red. A river winds through the center of the community, and various buildings, roads, and a baseball field are visible. The text is overlaid on the left side of the image.

Building Resilient Economies in Coal Communities

Economic Diversification Strategy
City of Richwood, Nicholas County, W.Va.



BUILDING RESILIENT
ECONOMIES *in*
COAL COMMUNITIES

ECONOMIC DIVERSIFICATION



**Downtown
Revitalization
& Housing**



**Outdoor
Recreation**



**Arts & Culture
Throughline**



**Energy
Innovation**



“We’d like to use the arts as a way to bring creative minds to Richwood, where people with a vision can reimagine the future along with us.”

- Cecil Ybanez, Co-owner of Bloomfield Art Gallery



Downtown Revitalization & Housing



1

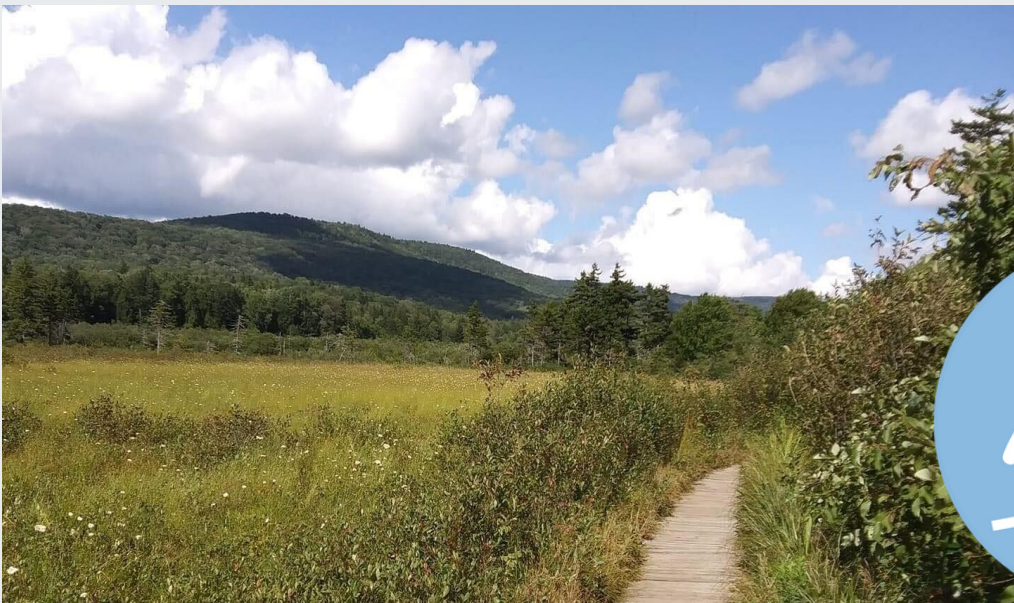
**INCORPORATING RENEWABLE ENERGY
SOURCES IN DOWNTOWN
REDEVELOPMENT PROJECTS**

2

**COMBINED HOUSING & REMOTE
WORKER READINESS STUDY**

3

**HOSTED "RICHWOOD
REDEVELOPMENT DAYS" TO ATTRACT
INVESTORS**



Outdoor Recreation



1

**EXPANDING AND UPGRADING
LOCAL RAIL TRAIL**

2

**CAPTURING ADDITIONAL VISITORS
THROUGH REGIONAL TRAIL SYSTEM**

3

**TARGETED BUSINESS ATTRACTION
FOR OUTDOOR OUTFITTER**



Arts & Culture



1

LEVERAGING ANNUAL MOUNTAIN WATERCOLOR FESTIVAL & RAMP FESTIVAL TO ATTRACT NEW RESIDENTS

2

SUPPORTING LOCAL ARTISTS AS LOCAL ENTREPRENEURS

3

DEVELOPING MULTIFUNCTIONAL OUTDOOR SPACE FOR ART PERFORMANCES, FARMERS MARKET & LOCAL FESTIVALS



Energy Innovation



1

BUILDING ON ENERGY-PRODUCING LEGACY: STRONG WORKFORCE AND ENERGY INFRASTRUCTURE

2

REPURPOSING RECLAIMED MINE LAND FOR SOLAR INSTALLATION

3

LEVERAGING COMMUNITY BENEFITS PLANS TO DELIVER JOBS AND POWER TO LOCAL RESIDENTS



Building Resilient Economies in Coal Communities

Economic Diversification Strategy
Northwest Colorado Development Council



BUILDING RESILIENT
ECONOMIES *in*
COAL COMMUNITIES



**Target Industry
Development**



**Clean Energy
Transitions**



**Build Local
Capacity**



“As we face the closing of power plants and coal mines, we realized we were all in the same leaky rowboat together. So, let’s pull together regionally ... and advance the region as a whole”

- Hon. Tim Redmond, Commissioner of Routt County, Colo.



Build Local Capacity



1

**FORMALIZED NORTHWEST COLORADO
DEVELOPMENT COUNCIL: UNITED 3
COUNTY REGION**

2

**EXECUTED ECONOMIC
DIVERSIFICATION STRATEGY**

3

**COMPETITIVELY AWARDED IEDC
ECONOMIC RECOVERY CORPS FELLOW**



Target Industry Development



1

REPURPOSE FACILITIES FOR MEAT
PROCESSING & STORAGE

2

COMPLETING FEASIBILITY STUDY TO
REPURPOSE POWER PLANT SITE

3

LEVERAGING WHITEWATER RAFTING
AS TOOL FOR ECONOMIC
DIVERSIFICATION



Tips for your community!

Do It Yourself!

- While Federal and state governments may provide resources, the future of the region belongs to its residents.

Regionalism Works

- Economic activity does not respect political boundaries – neither should economic adjustment activities.

Think Assets, Not Gaps

- Assess full range of local assets and build strategies to catalyze them.

No Secrets!

- Communication and transparency are vital to create community trust and attract investment.

Execute in short-term/Plan for long-term

- Effective short-term plans to “stop the bleeding” build local trust and buy-in for longer term efforts. Early wins help!

Hit for Singles, Not Home Runs

- Immediately serving affected workers is necessary, but the goal must be to diversify local/regional economies.



**BUILDING RESILIENT
ECONOMIES *in*
COAL COMMUNITIES**

Questions for you:

- **What is a project in your community that others would benefit from knowing about?**
- **How are you strategically layering regional, state and federal resources?**
- **What are the innovative partnerships taking place in your community?**
- **How does your CED project contribute to your community's economic resilience and diversification?**
- **What does the future of your energy community look like? What are the opportunities to build resilience?**

NATIONAL
ASSOCIATION
of COUNTIES



NACo®

BUILDING RESILIENT
ECONOMIES *in*
COAL COMMUNITIES

Grace Blanchard

Program Manager

Resilient Economies & Communities

gblanchard@naco.org

(202) 942-4274