



LAC COURTE OREILLES

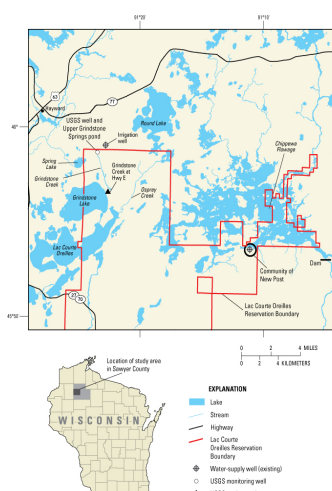
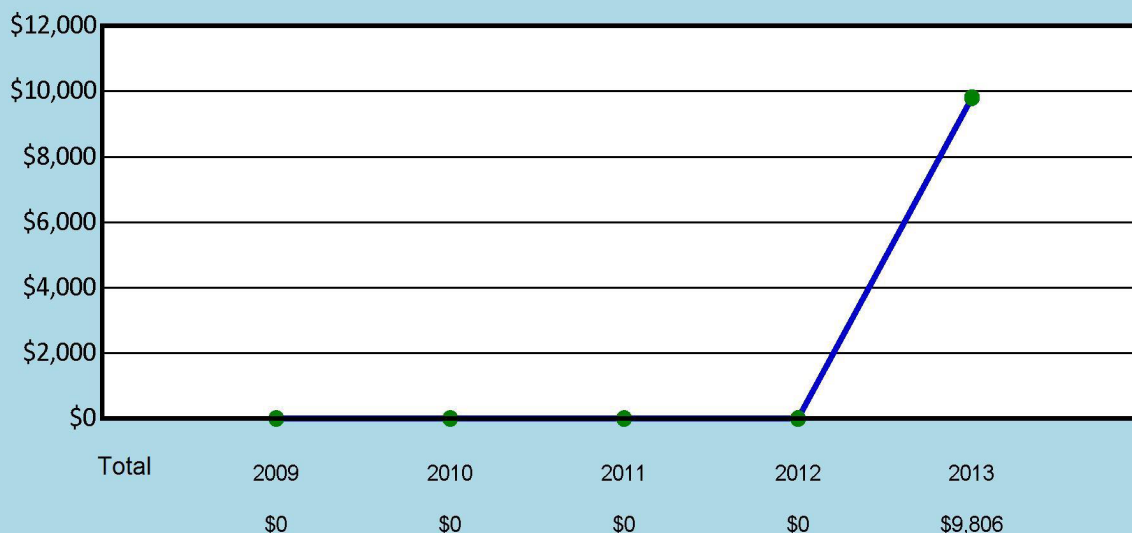


Figure T-1. Grand Total Collections



Tribe became Comprehensive FY 2012

Table T-1. Financial and Statistical Overview

	2013
Distributed Collections (\$)	9,527
Collections Forwarded to States (\$)	279
Total Collections (\$)	9,806
Expenditures (Outlays) (\$)	598,569
Caseload	92
Number of Children with Paternities Established or Acknowledged	76
Support Orders	NA
Current Support Due (\$)	20,881
Current Support Collected and Distributed (\$)	7,791
Past Due Support Owed (\$)	461,419
Past Due Support Collected and Distributed (\$)	NA



LAC COURTE OREILLES (cont.)

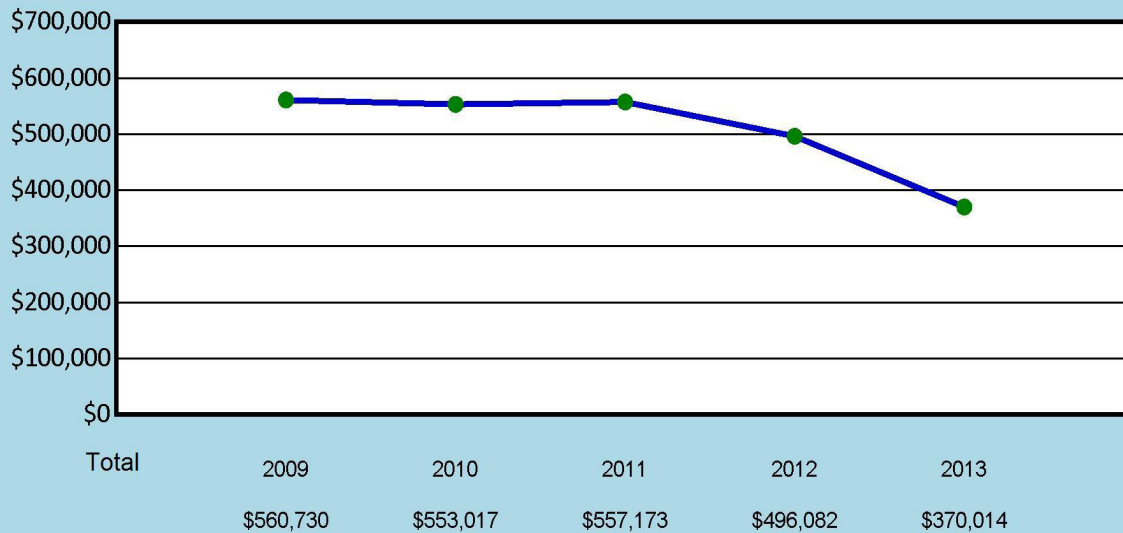
Tribal Special Points of Interest

- LCO Casino Lodge & Convention Center
- LCO Community College
- LCO Ojibwe School(K-12)
- LCO Head Start
- Waadookodaading Ojibwe Language Immersion School
- The Landing “On the Chippewa Flowage”
- Unemployment rate: 7.8% (Sawyer County)
- Native American: 17.1% of Sawyer County’s Population
- 2010: 66% unemployment on reservation

LAC DU FLAMBEAU



Figure T-1. Grand Total Collections



Tribe became Comprehensive FY 2002

Table T-1. Financial and Statistical Overview

	2013
Distributed Collections (\$)	367,296
Collections Forwarded to States (\$)	2,718
Total Collections (\$)	370,014
Expenditures (Outlays) (\$)	392,371
Caseload	921
Number of Children with Paternities Established or Acknowledged	583
Support Orders	618
Current Support Due (\$)	634,438
Current Support Collected and Distributed (\$)	366,634
Past Due Support Owed (\$)	1,410,940
Past Due Support Collected and Distributed (\$)	128,413



LAC DU FLAMBEAU (cont.)

No Information Reported



LEECH LAKE BAND

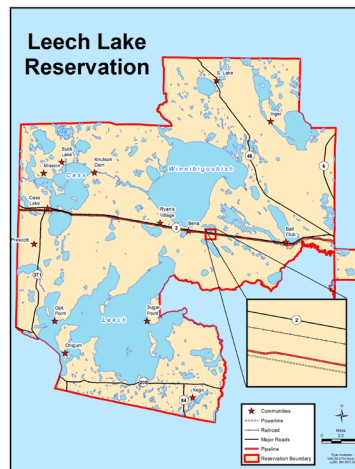
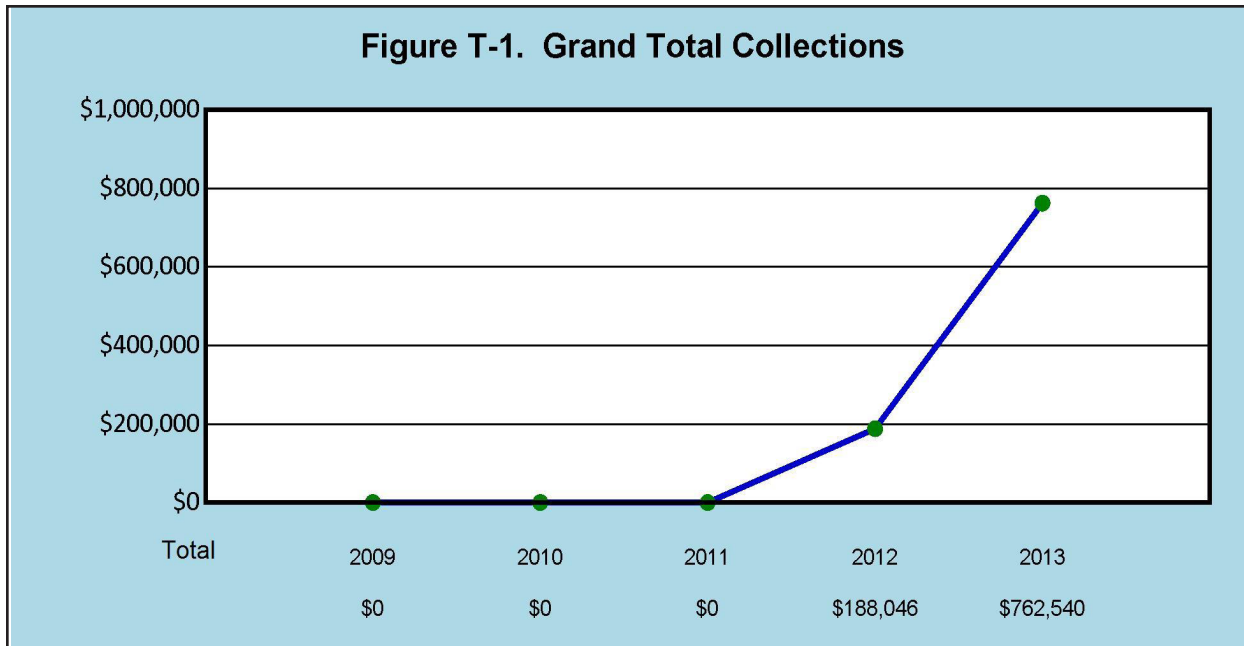


Figure T-1. Grand Total Collections



Tribe became Comprehensive FY 2011

Table T-1. Financial and Statistical Overview

	2013
Distributed Collections (\$)	63,000
Collections Forwarded to States (\$)	699,540
Total Collections (\$)	762,540
Expenditures (Outlays) (\$)	357,567
Caseload	626
Number of Children with Paternities Established or Acknowledged	858
Support Orders	617
Current Support Due (\$)	835,831
Current Support Collected and Distributed (\$)	749,019
Past Due Support Owed (\$)	331,328
Past Due Support Collected and Distributed (\$)	13,521



LEECH LAKE BAND (cont.)

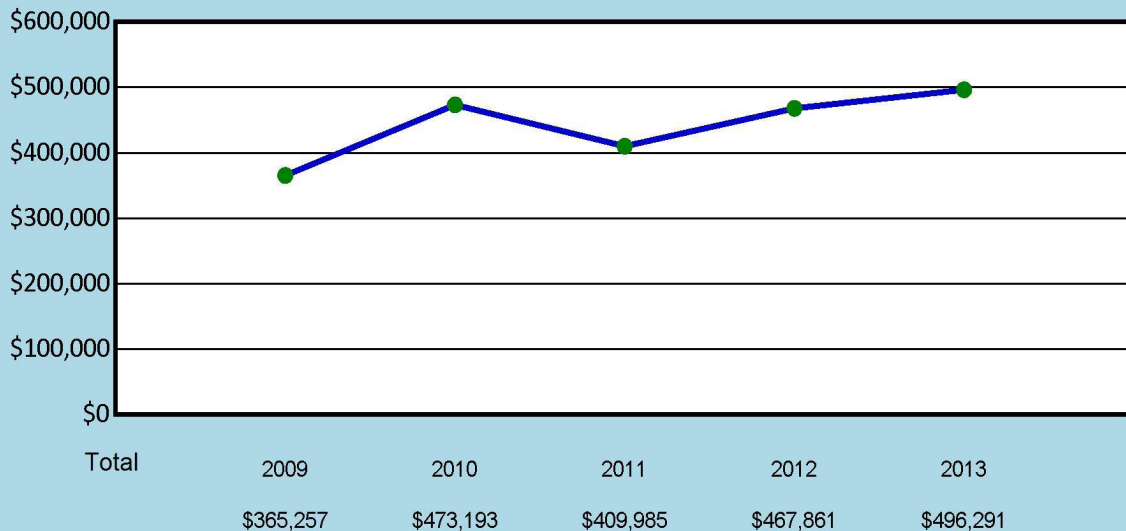
No Information Reported



LUMMI NATION



Figure T-1. Grand Total Collections



Tribe became Comprehensive FY 2003

Table T-1. Financial and Statistical Overview

	2013
Distributed Collections (\$)	412,862
Collections Forwarded to States (\$)	83,429
Total Collections (\$)	496,291
Expenditures (Outlays) (\$)	1,017,219
Caseload	803
Number of Children with Paternities Established or Acknowledged	14
Support Orders	361
Current Support Due (\$)	759,884
Current Support Collected and Distributed (\$)	341,107
Past Due Support Owed (\$)	2,196,315
Past Due Support Collected and Distributed (\$)	162,518



LUMMI NATION (cont.)

No Information Reported



MENOMINEE

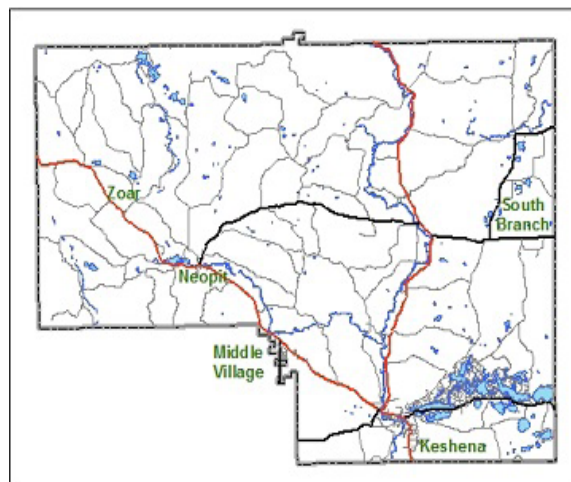


Figure T-1. Grand Total Collections



Tribes became Comprehensive FY 2003

Table T-1. Financial and Statistical Overview

	2013
Distributed Collections (\$)	1,571,677
Collections Forwarded to States (\$)	34,071
Total Collections (\$)	1,605,748
Expenditures (Outlays) (\$)	788,136
Caseload	1,697
Number of Children with Paternities Established or Acknowledged	1,352
Support Orders	1,600
Current Support Due (\$)	1,503,288
Current Support Collected and Distributed (\$)	1,031,999
Past Due Support Owed (\$)	6,818,944
Past Due Support Collected and Distributed (\$)	539,678



MENOMINEE (cont.)

Tribal Special Points of Interest

The Menominee Indian Tribe once occupied a land base estimated at 10 million acres now known as Wisconsin, and parts of Michigan and Illinois. The Tribe lost much of its land base during the early 1800's Treaty era. Today, the reservation is situated on 235,523 acres of Tribe's ancestral homelands which contains over 200,000 acres of the richest forests in the nation. The governing body of the Menominee Tribe is a nine-member Tribal Legislature that is elected by enrolled Tribal members. There is a separate, but equal Tribal Judicial Court that consists of a lower court and a supreme court. The Menominee Tribal Court has jurisdiction over all Native Americans within the exterior boundaries of the Menominee Indian Reservation.

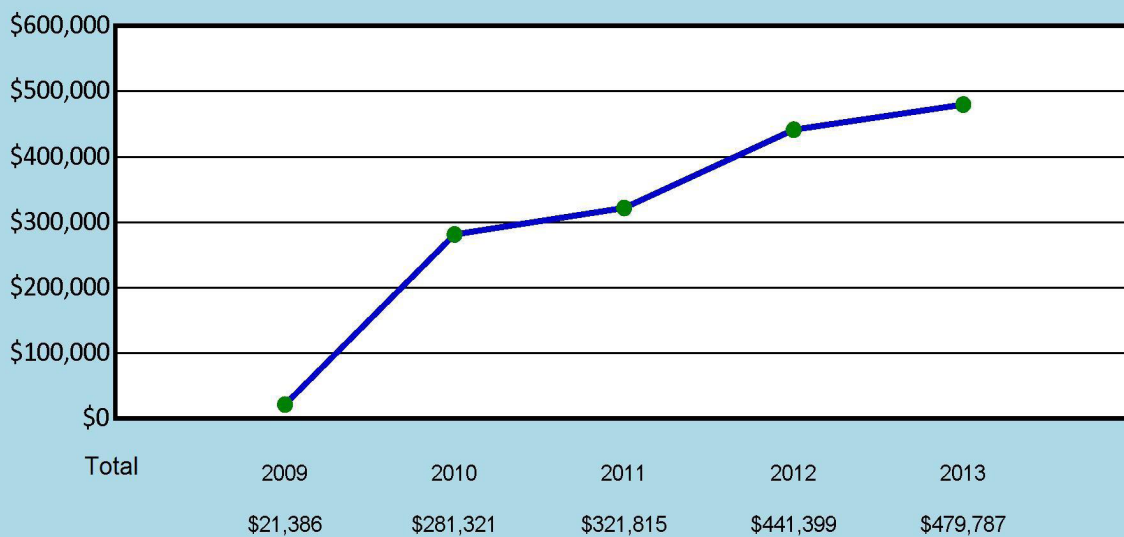


MESCALERO APACHE

New Mexico



Figure T-1. Grand Total Collections



Tribe became Comprehensive FY 2008

Table T-1. Financial and Statistical Overview

	2013
Distributed Collections (\$)	448,239
Collections Forwarded to States (\$)	31,548
Total Collections (\$)	479,787
Expenditures (Outlays) (\$)	590,011
Caseload	527
Number of Children with Paternities Established or Acknowledged	175
Support Orders	316
Current Support Due (\$)	79,153
Current Support Collected and Distributed (\$)	44,139
Past Due Support Owed (\$)	1,526,434
Past Due Support Collected and Distributed (\$)	126,622



MESCALERO APACHE (cont.)

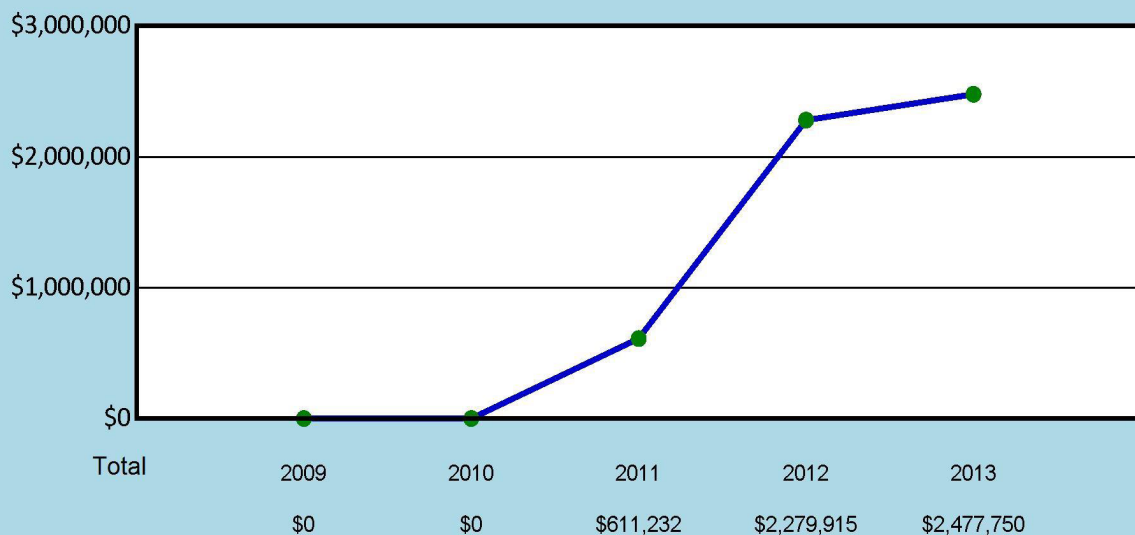
No Information Reported



MILLE LACS BAND



Figure T-1. Grand Total Collections



Tribe became Comprehensive FY 2011

Table T-1. Financial and Statistical Overview

	2013
Distributed Collections (\$)	435,427
Collections Forwarded to States (\$)	2,042,323
Total Collections (\$)	2,477,750
Expenditures (Outlays) (\$)	421,340
Caseload	1,540
Number of Children with Paternities Established or Acknowledged	6
Support Orders	1,511
Current Support Due (\$)	7,083,211
Current Support Collected and Distributed (\$)	4,757,722
Past Due Support Owed (\$)	6,724,788
Past Due Support Collected and Distributed (\$)	67,247



MILLE LACS BAND (cont.)

Tribal Narrative

Case load and Collections:

- MLB had 1,540 total cases open in the IV-D program. 1,511 cases have court ordered support representing 98% of the case count;
- The total owed on support for open cases was \$7,083,211 and of the total \$4,757,722 was collected for a 63% collection rate;
- .01% of the \$6,724,788.09 owed in arrears was collected;

Community Outreach:

- 15 paternity tests were performed by our program children needing paternity established;
- Sent monthly Band member newspaper articles mailed to 4,358 Mille Lacs Band members;
- Attended 2 MLB community health fairs;
- Attended Minnesota Family Support and Recovery Council annual conference as a presenter and sponsor;
- Had an information table set up at the MLB State of The Band Address;
- Had an information table at the Mille Lacs Band Grand Casino Casino spring job fair.

Ongoing Efforts:

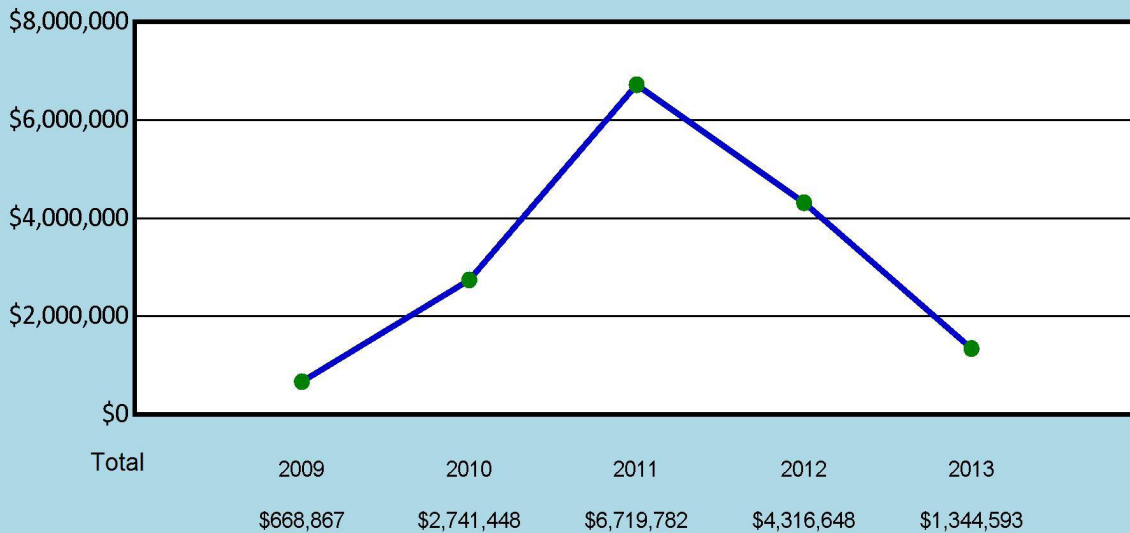
- MLB is in the process of revising tribal statutes to maintain consistency within the program and the courts;
- MLB continues to work with MN DHS to revise work plan.
- In the process of getting MTS fully operational for the program;
- Continue to work with MN Dept. of Education and Economic Development to honor Tribal Child Support program IWO to garnish unemployment benefits.
- Generate a collaborative approach to education of teens in the community with other tribal programs;
- Working with Tribal leaders to identify a bigger office space to accommodate the rapid growth of the departments staffing and space needs;
- Research fathers program opportunities.



MODOC



Figure T-1. Grand Total Collections



Tribe became Comprehensive FY 2008

Table T-1. Financial and Statistical Overview

	2013
Distributed Collections (\$)	1,344,593
Collections Forwarded to States (\$)	NA
Total Collections (\$)	1,344,593
Expenditures (Outlays) (\$)	1,633,561
Caseload	937
Number of Children with Paternities Established or Acknowledged	663
Support Orders	747
Current Support Due (\$)	1,595,435
Current Support Collected and Distributed (\$)	387,433
Past Due Support Owed (\$)	16,410,212
Past Due Support Collected and Distributed (\$)	472,270



MODOC (cont.)

Tribal Special Points of Interest

History

Once occupying the lands that would today be along the California-Oregon border, member of the Modoc Tribe were removed to Indian Territory in 1873 after capture by U.S. Government armed forces following a six-month war. By 1891, just 68 members of the tribe survived. Today, with about 200 members, the tribe is the smallest recognized in Oklahoma.

Economic/Future Growth

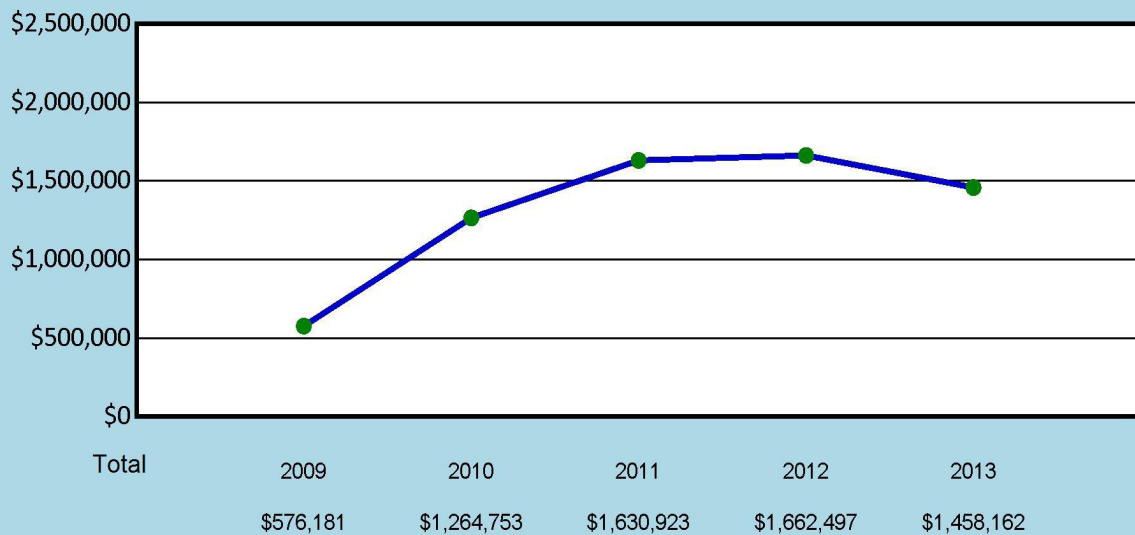
The tribe operates Red Cedar Recycling and The Stables, a gaming facility and restaurant in Miami. The reintroduction of a bison herd is part of the tribe's economic development plan.



MUSCOGEE CREEK NATION



Figure T-1. Grand Total Collections



Tribe became Comprehensive FY 2008

Table T-1. Financial and Statistical Overview

	2013
Distributed Collections (\$)	1,181,034
Collections Forwarded to States (\$)	277,128
Total Collections (\$)	1,458,162
Expenditures (Outlays) (\$)	2,009,386
Caseload	1,380
Number of Children with Paternities Established or Acknowledged	1,503
Support Orders	1,066
Current Support Due (\$)	2,126,062
Current Support Collected and Distributed (\$)	963,274
Past Due Support Owed (\$)	7,929,781
Past Due Support Collected and Distributed (\$)	946,771



MUSCOGEE CREEK NATION (cont.)

Tribal Special Points of Interest

Muscogee Nation - Past and Present

- The original homeland of the Muscogee People was in Southeastern North America.
- Today the MCN jurisdictional boundaries cover all or parts of eleven counties within the state of Oklahoma.
- There are currently 76,980 enrolled citizens of the Muscogee (Creek) Nation.
- The people of the Muscogee Nation strive to preserve their heritage, cultural values, and language, while addressing scientific and technological advances, changing demographics, dynamic local, state and national level politics, globalization, life-long education, health care, and family structure.

The Muscogee (Creek) Nation Office of Child Support Enforcement strives to:

- Reduce Indian child poverty
- Increase family stability and self-sufficiency
- Work to reestablish parent-child relationships
- Work with other IV-D agencies to provide child support services
- Locate absent parents
- Determine parentage, if necessary
- Establish and modify child support orders
- Collect and distribute child support in an efficient and timely manner
- Reduce court actions through mediation

Tribal Narrative

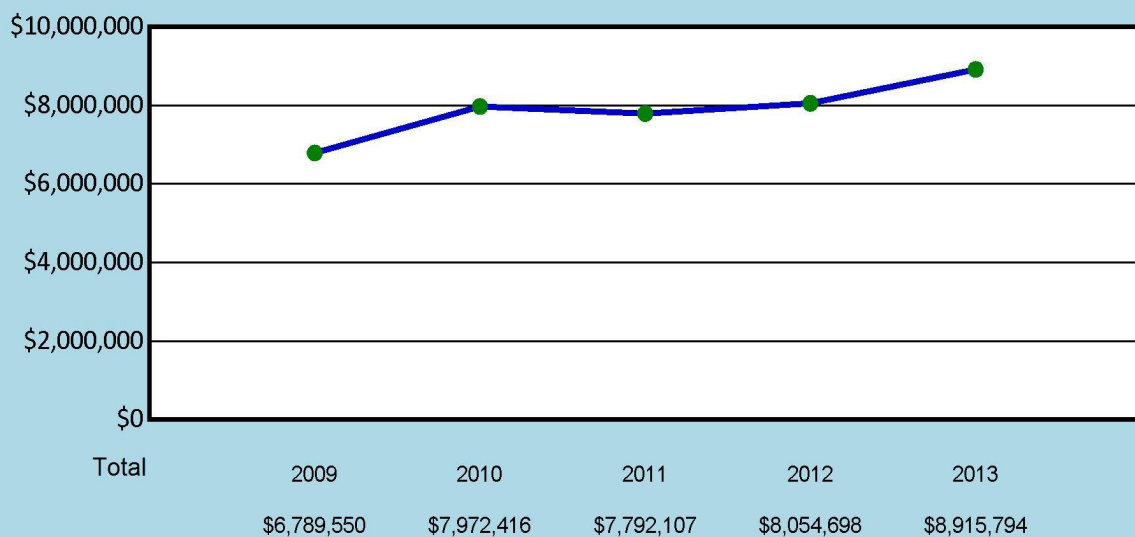
Muscogee (Creek) Nation Office of Child Support Enforcement

The MCN Office of Child Support became a comprehensive program on July 1, 2008. By the end of fiscal year 2008, the agency had 301 cases and had collected \$65,190. In five years the agency grew over 1,380 cases and collected over \$1.9M. In August 2013, the final phase of our agency's Tribal Alternative to Incarceration Program (TAIP) was implemented. This program uses strategies to increase compliance and reduce the build-up of unpaid arrears by working with non-custodial parents, who are unemployed or underemployed, with their search for employment.

NAVAJO NATION



Figure T-1. Grand Total Collections



Tribe became Comprehensive FY 2002

Table T-1. Financial and Statistical Overview

	2013
Distributed Collections (\$)	8,574,674
Collections Forwarded to States (\$)	341,120
Total Collections (\$)	8,915,794
Expenditures (Outlays) (\$)	3,557,209
Caseload	14,301
Number of Children with Paternities Established or Acknowledged	16,446
Support Orders	6,617
Current Support Due (\$)	17,139,846
Current Support Collected and Distributed (\$)	5,623,871
Past Due Support Owed (\$)	74,499,746
Past Due Support Collected and Distributed (\$)	3,092,902



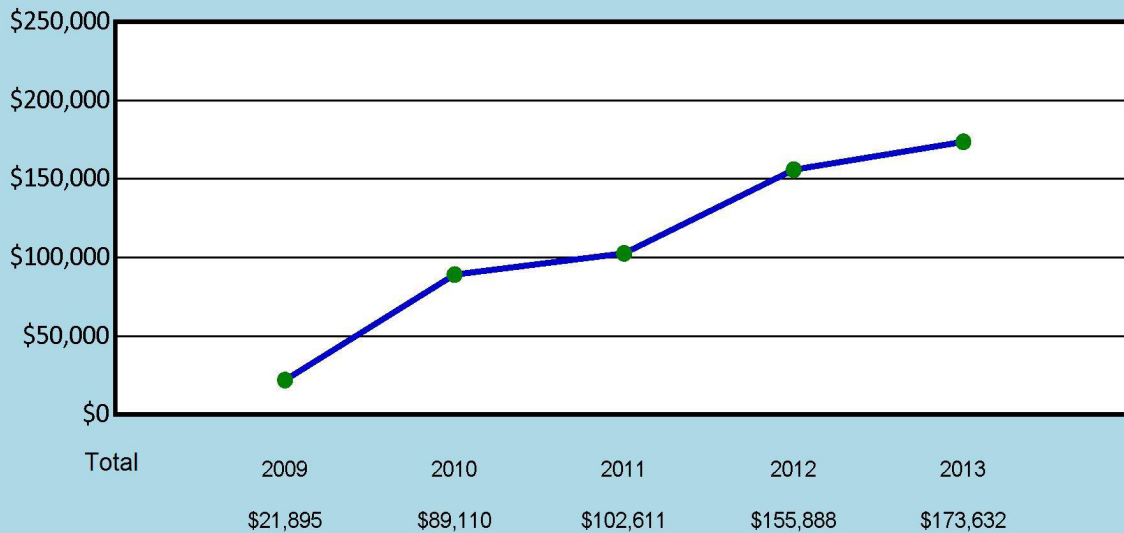
NAVAJO NATION (cont.)

No Information Reported

NEZ PERCE



Figure T-1. Grand Total Collections



Tribe became Comprehensive FY 2009

Table T-1. Financial and Statistical Overview

	2013
Distributed Collections (\$)	40,002
Collections Forwarded to States (\$)	133,630
Total Collections (\$)	173,632
Expenditures (Outlays) (\$)	746,478
Caseload	278
Number of Children with Paternities Established or Acknowledged	368
Support Orders	267
Current Support Due (\$)	469,198
Current Support Collected and Distributed (\$)	141,449
Past Due Support Owed (\$)	116,225
Past Due Support Collected and Distributed (\$)	38,518



NEZ PERCE (cont.)

No Information Reported



NOOKSACK

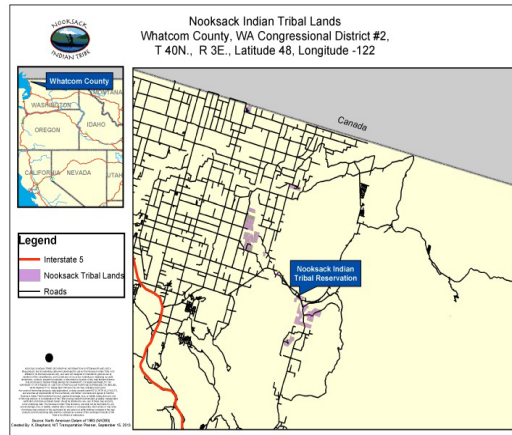
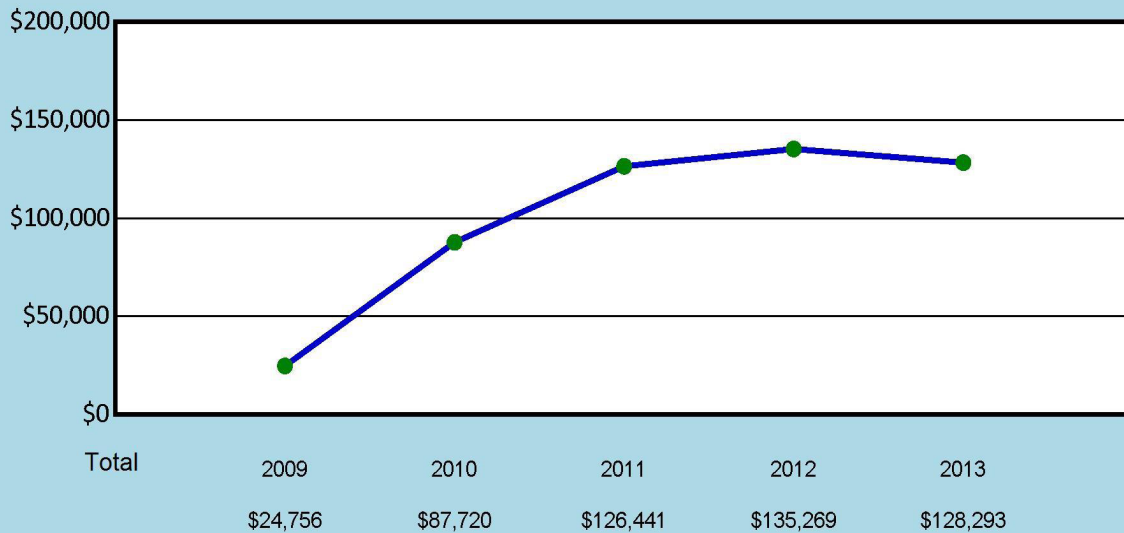


Figure T-1. Grand Total Collections



Tribe became Comprehensive FY 2009

Table T-1. Financial and Statistical Overview

	2013
Distributed Collections (\$)	68,147
Collections Forwarded to States (\$)	60,146
Total Collections (\$)	128,293
Expenditures (Outlays) (\$)	877,445
Caseload	303
Number of Children with Paternities Established or Acknowledged	230
Support Orders	243
Current Support Due (\$)	248,288
Current Support Collected and Distributed (\$)	92,249
Past Due Support Owed (\$)	692,376
Past Due Support Collected and Distributed (\$)	42,772



NOOKSACK (cont.)

Tribal Special Points of Interest

The Nooksack Tribe

The Nooksack Indian Tribe is a Federally recognized Indian Tribe occupying a Reservation established pursuant to the 1855 Treaty of Point Elliott. The Nooksack Indian Tribe is located in eastern Whatcom County, Washington, near the Canadian Border. The Tribe's fragmented lands include a 2.2 acre Reservation, 298 acres of Fee and Trust Lands, and an additional 2000 acres in private allotments. The Tribe was divided by the Canadian Border, as established in 1846 with the Oregon Treaty. This resulted in populations of the Tribe divided by the Border. Today, most of the 2028 Nooksack members living within the United States live from the Canadian border through Skagit County to the south and from the sea eastwards to Mt. Baker with 1,032 members living on Tribal lands.

Tribal Narrative

Joblessness and Dropout Rate

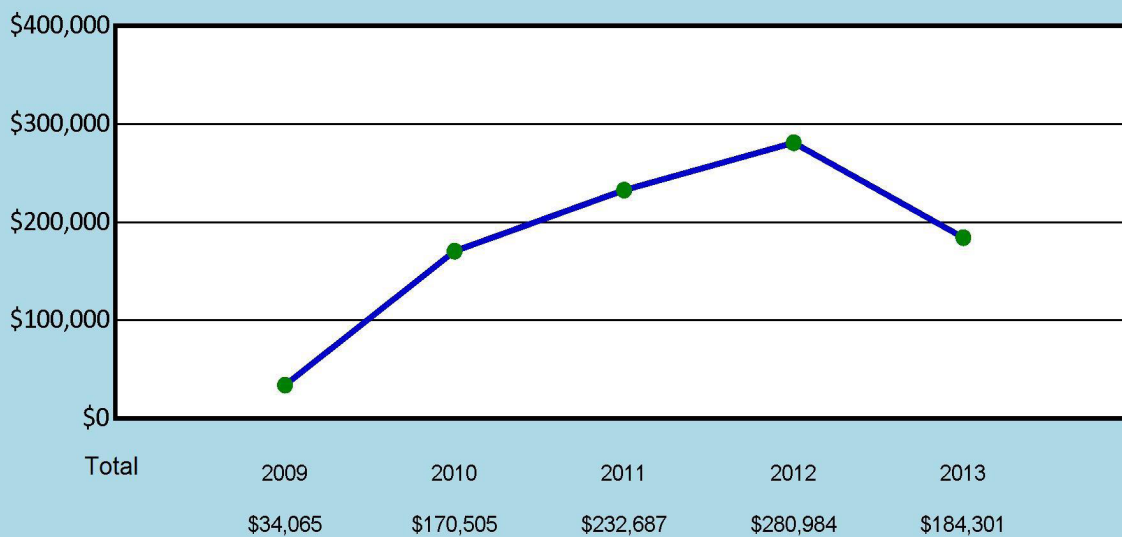
The Nooksack Indian Tribe is traditionally a hunting and fishing tribe that, until recently, relied on the harvest of abundant marine and forest resources to meet food and shelter needs. With Anglo-Saxon settlement, and eventual decline in fishing and timber opportunities, the Tribe now has a potential workforce of 1087 members, of whom 70% is either unemployed or seasonally unemployed. The negative impact of the Boarding School era has caused suspicion of western education systems and contributed to a persistent dropout rate of over 50%. Limited education combined with familial under or unemployment causes persistent poverty with limited skills to move out of impoverishment. The situation has led to multi-generational depression with associated high levels of substance abuse.



NORTHERN ARAPAHO



Figure T-1. Grand Total Collections



Tribe became Comprehensive FY 2009

Table T-1. Financial and Statistical Overview

	2013
Distributed Collections (\$)	182,317
Collections Forwarded to States (\$)	1,984
Total Collections (\$)	184,301
Expenditures (Outlays) (\$)	1,084,930
Caseload	1,920
Number of Children with Paternities Established or Acknowledged	26
Support Orders	1,091
Current Support Due (\$)	1,532,109
Current Support Collected and Distributed (\$)	234,332
Past Due Support Owed (\$)	14,726,442
Past Due Support Collected and Distributed (\$)	30,136



NORTHERN ARAPAHO (cont.)

Tribal Special Points of Interest

We have been cooperating with the Shoshone and Arapaho Tribal Court to set up our own specific Child Support Hearing Magistrate to oversee and make judgment on all tribal Child Support hearings in 2014.

NACSP has faced a change in Directorship of the program and staff changes in key positions. NACSP has continued to serve the community with best service possible under these circumstances, but the effects of this change are still being felt. We look forward to Fiscal Year 2014 being an even more productive year for NACSP.

The Wind River Indian Reservation is the seventh-largest Indian reservation by area in the United States, encompassing a 3,473.272 sq mi and just over one-third of Fremont County and over one-fifth of Hot Springs County.[1] The reservation is located in the Wind River Basin, and is surrounded by the picturesque Wind River Mountain Range, Owl Creek Mountains, and the Absaroka Mountains. It is shared by the Northern Arapaho and Eastern Shoshone tribes of which, the population in 2011, 8,177 were Arapaho and 3,737 were Shoshone.

The Northern Arapaho Tribe of Wyoming is one of four groups of Arapaho who originally occupied the headwaters of the Arkansas and Platte Rivers. They speak a variation of the Algonquin language, and are that people's most southwest extension. Culturally, they are Plains Indians, but socially and historically distinct. After signing the Treaty of 1851, the Arapaho and Cheyenne then shared land encompassing one-sixth of Wyoming, one-quarter of Colorado and parts of western Kansas and Nebraska. Later, when the Treaty of 1868 left the Hinono'eiteen (Arapaho Nation) without a land base, they were placed with the Shoshone in west central Wyoming, on the Wind River Reservation.

Tribal Narrative

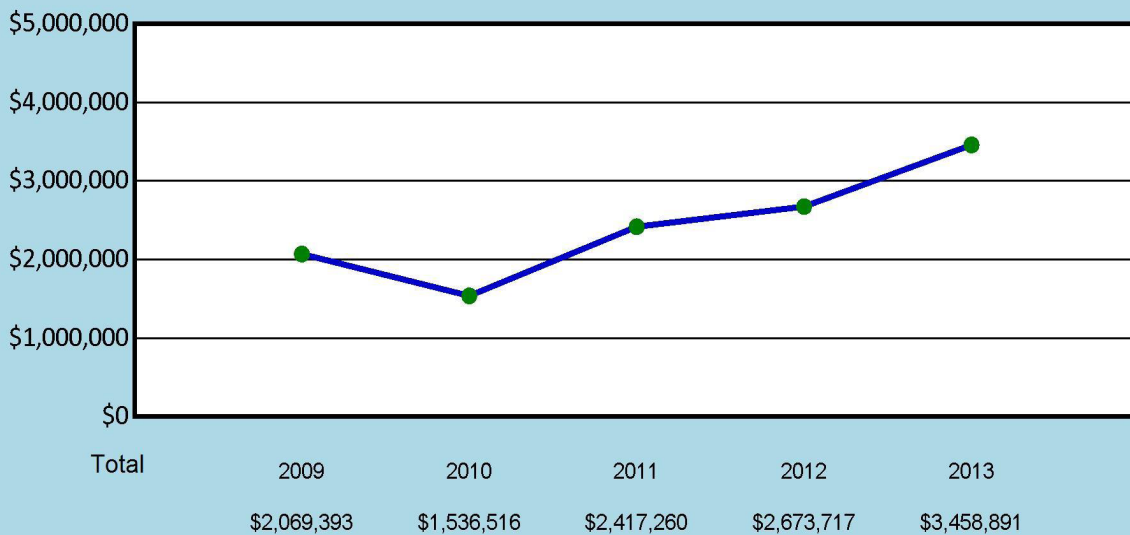
We continue to have difficulties arise involving the cooperative working relationship with the Shoshone & Arapaho Tribal Court of the Wind River Reservation. The scheduling of child support hearings and consistency of judgments was one of our biggest challenges faced this past year. This has made a significant impact in our Income Withholding Order collections. To combat this we have been cooperating with the court to set up our own specific Child Support Hearing Magistrate to oversee and make judgment on all tribal CS hearings. We hope this will solve many of the problems we've been facing. Currently we are taking an average of 6 cases per week through the Judicial System on the one day per week that the Tribal Court has set aside for us to schedule all our child support hearings.



ONEIDA NATION



Figure T-1. Grand Total Collections



Tribe became Comprehensive FY 2008

Table T-1. Financial and Statistical Overview

	2013
Distributed Collections (\$)	2,489,477
Collections Forwarded to States (\$)	969,414
Total Collections (\$)	3,458,891
Expenditures (Outlays) (\$)	1,192,170
Caseload	2,680
Number of Children with Paternities Established or Acknowledged	1,685
Support Orders	2,360
Current Support Due (\$)	2,571,483
Current Support Collected and Distributed (\$)	1,463,167
Past Due Support Owed (\$)	12,018,897
Past Due Support Collected and Distributed (\$)	1,029,806



ONEIDA NATION (cont.)

Footnote

1. Through the case transfer process the tribe is assuming all debt on the cases that transferred jurisdiction from the State of Wisconsin. The tribe went from \$8,852,515 to \$12,018,897 in arrears from fiscal year 2012 to fiscal year 2013. Again, this year saw a substantial increase in arrears debt due to the transfers and assuming the debt that was already incurred in the state program.
2. The tribe was able to expunge \$362,074 in arrears by actively working the cases that transferred from state courts.

Tribal Narrative

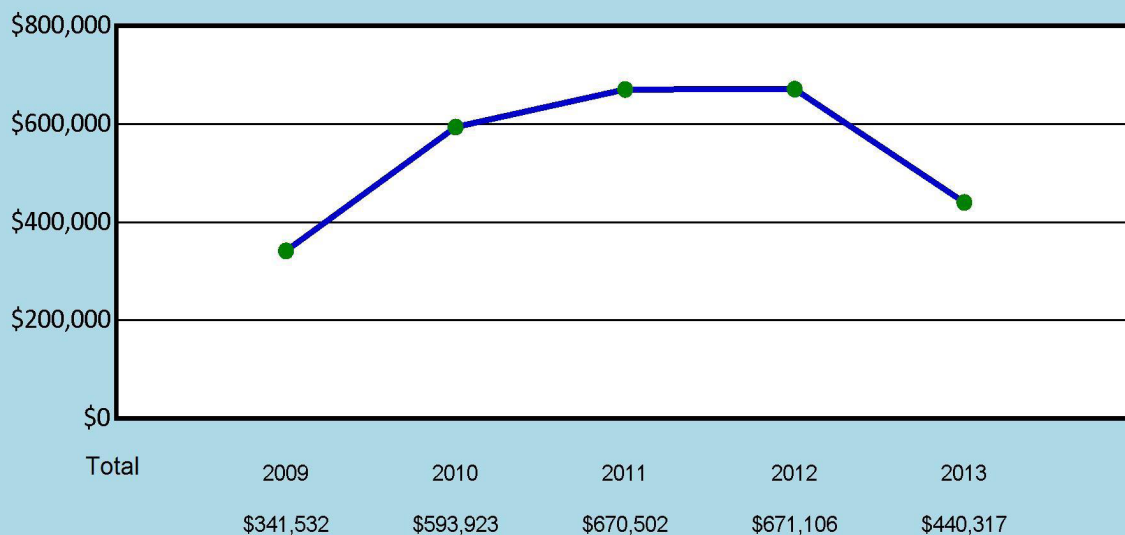
The Tribe initiated a S.T.A.M.P.S. (Sending Treasures and Making Parents Smile) program that invites children accompanied by their parents and caregivers to make keepsakes for their incarcerated parent. Children are encouraged to send their parent(s) colorings, stories, and pictures. The tribal CSA mails the items to the inmates to avoid any contact with parents who cannot or choose not to have contact with the incarcerated parent. This program encourages a relationship with children and their incarcerated parent with the intent that the relationship will grow and continue upon release.



OSAGE NATION



Figure T-1. Grand Total Collections



Tribe became Comprehensive FY 2007

Table T-1. Financial and Statistical Overview

	2013
Distributed Collections (\$)	440,317
Collections Forwarded to States (\$)	NA
Total Collections (\$)	440,317
Expenditures (Outlays) (\$)	556,376
Caseload	346
Number of Children with Paternities Established or Acknowledged	12
Support Orders	225
Current Support Due (\$)	915,243
Current Support Collected and Distributed (\$)	495,721
Past Due Support Owed (\$)	419,522
Past Due Support Collected and Distributed (\$)	121,366



OSAGE NATION (cont.)

Tribal Special Points of Interest

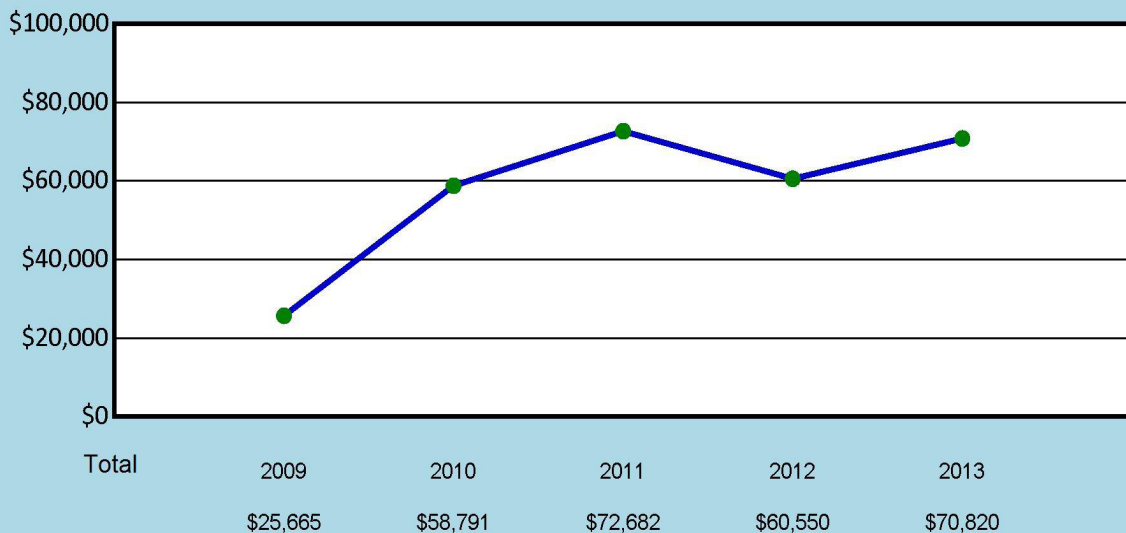
- In 2007, ONCSS was emerged as a strong, ethical child support program, which provides services to Osage children wherever they may live; to Native American children within the Osage Reservation boundaries; and to non-Indians who consent to the jurisdiction of the Osage Nation Court.
- We strive to improve the welfare of children by strengthening family responsibility and values while ensuring cultural and community integrity.
- It is our goal to increase family stability and prosperity; determine parentage when necessary; establish and distribute child support in an efficient and timely manner.
- We work very closely with our Tribal Court and District Court.



PENOBSCOT NATION



Figure T-1. Grand Total Collections



Tribe became Comprehensive FY 2008

Table T-1. Financial and Statistical Overview

	2013
Distributed Collections (\$)	42,595
Collections Forwarded to States (\$)	28,225
Total Collections (\$)	70,820
Expenditures (Outlays) (\$)	664,629
Caseload	34
Number of Children with Paternities Established or Acknowledged	1
Support Orders	34
Current Support Due (\$)	79,229
Current Support Collected and Distributed (\$)	64,515
Past Due Support Owed (\$)	89,555
Past Due Support Collected and Distributed (\$)	6,857



PENOBSCOT NATION (cont.)

Footnote

Arrears debt is usually owed to the Custodial Parent or to the State of Maine for TANF debts (the Penobscot Nation currently does not operate a Tribal TANF Program). Collection Policy: PNCSA accepts cash, checks or money orders and a case is motioned up for enforcement action when payments are 30 days delinquent; then an IWO can be sent to the employer. 100% of PNCSA paying cases have child support orders. Failure to pay: PNCSA can issue an IWO, revoke a license, and pull tribal licenses and court order job searches.

Tribal Special Points of Interest

General Facts: The Penobscot Nation is located in Maine. The Tribes has a Chief, Vice Chief and a Tribal Council of 12 with half of the council seats being up for election every 2 years. The Penobscot speak Penobscot and other languages in the Algonquian language group.

History: The Penobscot Nation is one of the oldest continuously operating governments in the world. The history is passed on to generations by stories, language, family knowledge and the cultural knowledge.

Sovereignty: The Penobscot Tribe works continuously to assert their sovereignty by handling issues or creating programs for the Tribal members that are located on the reservation.

Jurisdiction: Jurisdiction has continued to be a challenge for the Penobscot Nation due to the 1980 Land Claims Settlement Act.

Economic Development: The Penobscot Tribe has been working towards more economic development ideas.

Tribal Narrative

The Penobscot Nation Child Support Agency (PNCSA) has operated a Comprehensive Tribal IV-D program since July 1, 2008. PNCSA operates the only Tribal IV-D program in Region 1, and works closely with the State of Maine Division of Support Enforcement and Recovery staff on "shared" TANF cases.

The PNCSA currently collects 76% of its current support due, and maintains a 100% paternity establishment rate.

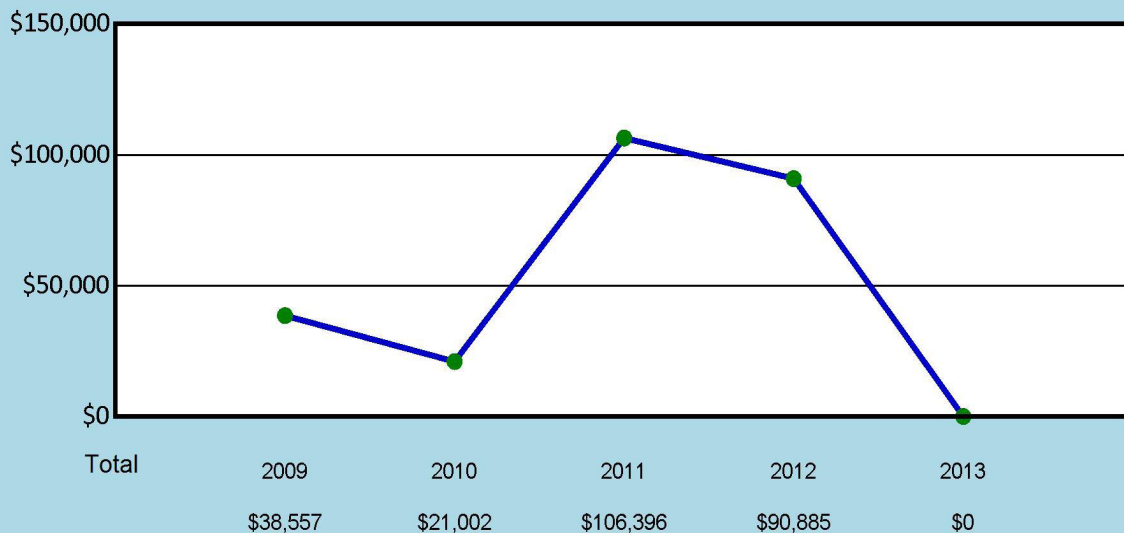
The agency's principles and objectives include:

- Strength based holistic services
- Entire family treated with respect
- Initial goal is for Stipulated Orders (agreement between parties)
- Referrals to other appropriate services
- Client access to a Family Resource Room
- Assistance with job searches, voluntarily or court-ordered

PONCA TRIBE OF OKLAHOMA



Figure T-1. Grand Total Collections



Tribe became Comprehensive FY 2008

Table T-1. Financial and Statistical Overview

	2013
Distributed Collections (\$)	NA
Collections Forwarded to States (\$)	NA
Total Collections (\$)	NA
Expenditures (Outlays) (\$)	530,364
Caseload	NA
Number of Children with Paternities Established or Acknowledged	NA
Support Orders	NA
Current Support Due (\$)	NA
Current Support Collected and Distributed (\$)	NA
Past Due Support Owed (\$)	NA
Past Due Support Collected and Distributed (\$)	NA



PONCA TRIBE OF OKLAHOMA (cont.)

No Information Reported