

# CHILD SUPPORT: MORE MONEY FOR FAMILIES

## COLLECTIONS

**\$32 Billion**

in child support collected by state and tribal child support programs in FY2013



**95%**

went to families



5% reimbursed public assistance dollars

**74%**

collected through income withholding from the employee's paycheck



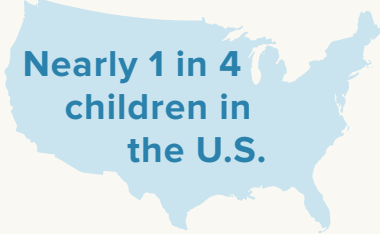
## CASELOAD

In 2013 the child support program served

**17 Million children**



Nearly 1 in 4 children in the U.S.



Custodial parents eligible for child support\*

**82%**

are women

**68%**

White

**79%**

are 30 or older

**25%**

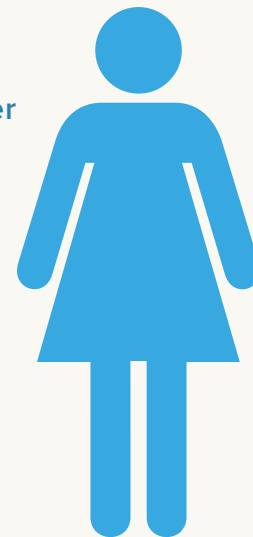
Black

**57%**

have just one eligible child

**21%**

Hispanic (any race)



Families eligible for child support\*

**29%** of custodial families have income below the federal poverty level

Child support represents **45%** of family income for poor custodial families that receive it

## COST-EFFECTIVENESS

One of the most cost-effective government programs



For every **\$1.00** spent...

...the child support program collects **\$5.31**

