

# HPOG 2.0 SUPPORT SERVICES AIDING TRAINING PROGRESS YEAR 2\*

The Health Profession Opportunity Grants (HPOG) program provides an extensive network of support services to help participants overcome barriers to training and employment, following the career pathways model.

## TRAINING PROGRESS DATA

## BY THE END OF YEAR 2:

**14,738**  
participants were enrolled

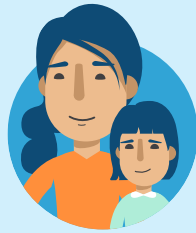
**69%**  
of all enrolled participants started healthcare training

**88%**  
of healthcare trainings started were completed or still in progress

## TOP 5 SUPPORT SERVICES OFFERED BY ALL GRANTEES



**CASE  
MANAGEMENT**



**CHILD/DEPENDENT  
CARE ASSISTANCE**



**TRANSPORTATION  
ASSISTANCE**

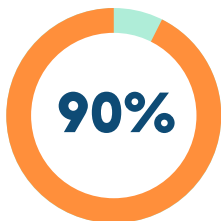


**JOB PLACEMENT  
ASSISTANCE**

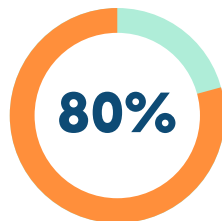


**JOB SEARCH  
ASSISTANCE**

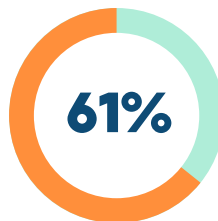
## TOP 5 SUPPORT SERVICES RECEIVED BY PARTICIPANTS



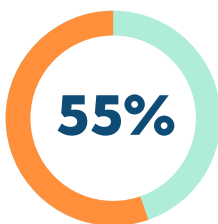
**CASE  
MANAGEMENT**



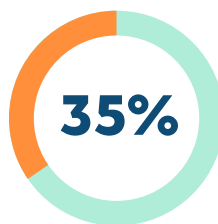
**TRAINING TUITION  
ASSISTANCE<sup>1</sup>**



**ACADEMIC  
ADVISING**



**TRAINING-RELATED  
COSTS ASSISTANCE<sup>2</sup>**



**TRANSPORTATION  
ASSISTANCE**

AB's HPOG coach provided continuous supportive services, helping to balance her work and school schedules and find reliable childcare for her children.

— **AB AT VOLUNTEERS  
OF AMERICA TEXAS**

“The transportation assistance helped me save money while I was struggling financially. Getting to school was one less thing for me to worry about while I was trying to improve my life.”

— **ORISHA AT HOSTOS  
COMMUNITY COLLEGE**

<sup>1</sup> Percentage of participants' healthcare occupation training funded.

<sup>2</sup> Does not include tuition assistance.

\* Based on key findings from the Health Profession Opportunity Grants 2.0: Year Two Annual Report (2016-17) <https://www.acf.hhs.gov/opre/resource/health-profession-opportunity-grants-20-year-two-annual-report-201617>. Data represents the time from program start (September 2015) to the end of year two (September 2017).



ADMINISTRATION FOR  
**CHILDREN & FAMILIES**



Health Profession Opportunity Grants  
**OFFICE OF FAMILY ASSISTANCE**