



American Indian and
Alaska Native

family and child experiences survey

American Indian and Alaska Native Head Start Family and Child Experiences Survey 2015: Educational and Professional Development of Lead Teachers

What is Head Start?

- Head Start programs promote school readiness for young children ages 3 to 5 in low-income families nationwide. Programs provide comprehensive services to support children's early learning and health, as well as their families' well-being.
- Early Head Start (EHS) serves pregnant women, infants, and toddlers, but EHS programs are not included in this study.
- Programs engage parents in their children's learning and aim to strengthen parent-child relationships. In addition, they promote parents' progress toward their own educational and employment goals.

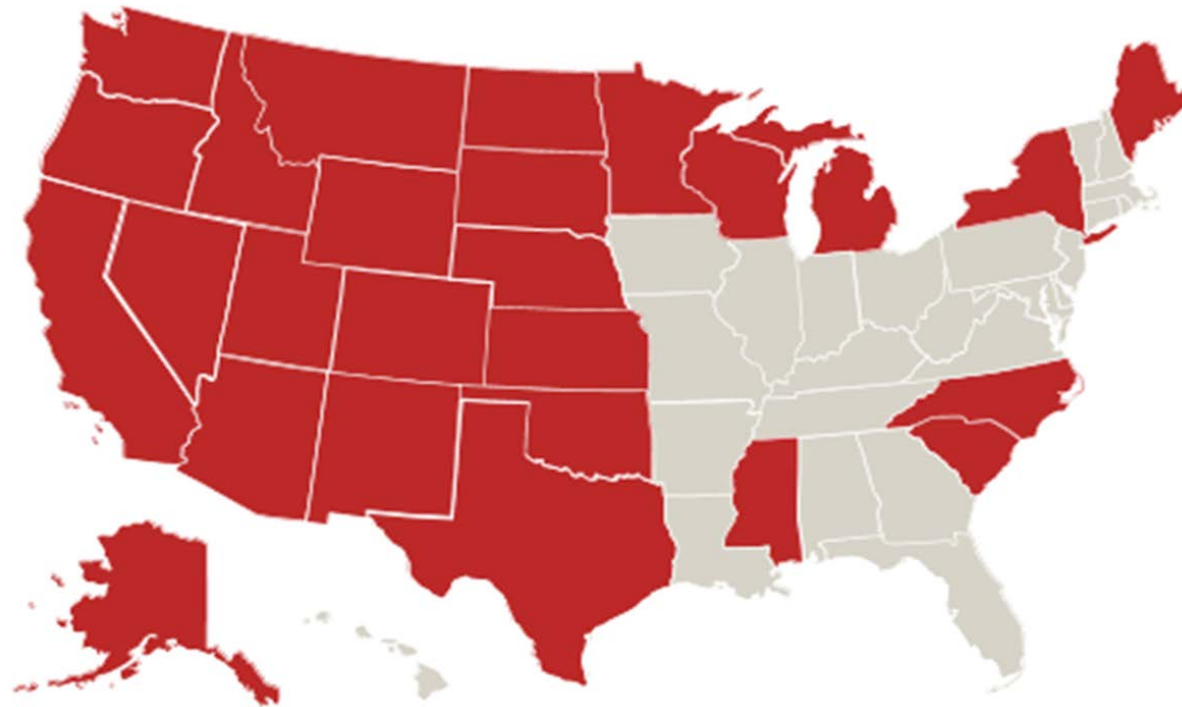


What are the regions of Head Start?

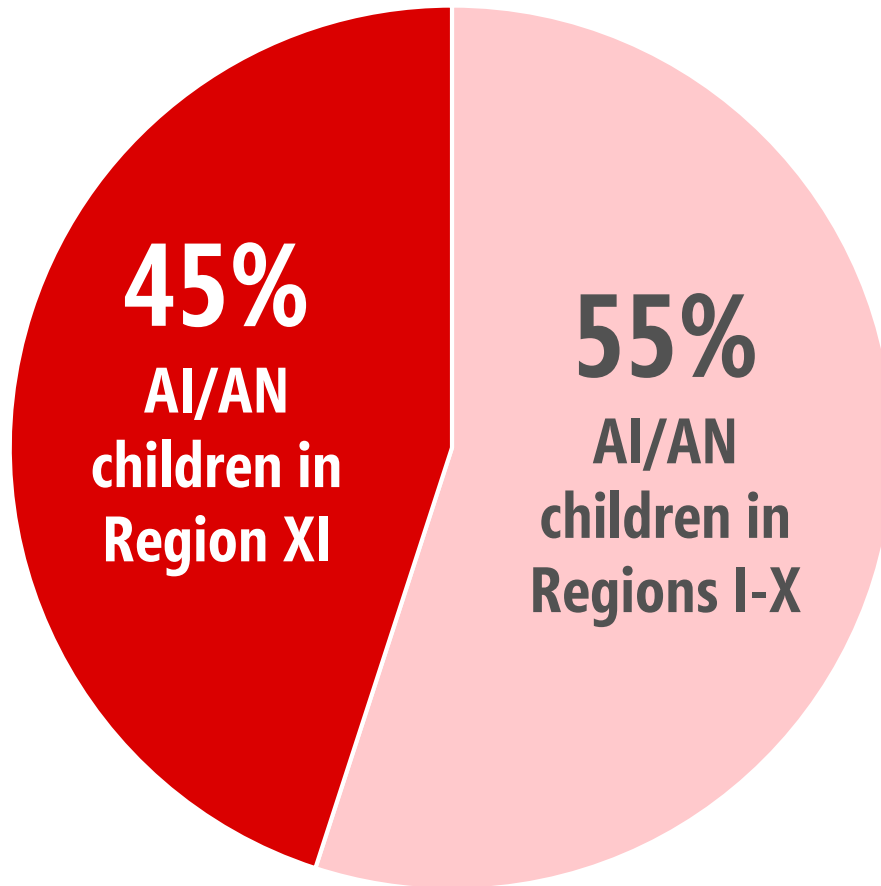
- Head Start operates in 12 regions nationwide
- Regions I-X are geographically defined
- Regions XI and XII are defined by the populations served.
 - Region XI: Grants to federally-recognized American Indian/Alaska Native tribes
 - Region XII: Children and families of migrant and seasonal farmworkers



Region XI Head Start is in 26 states (in red).

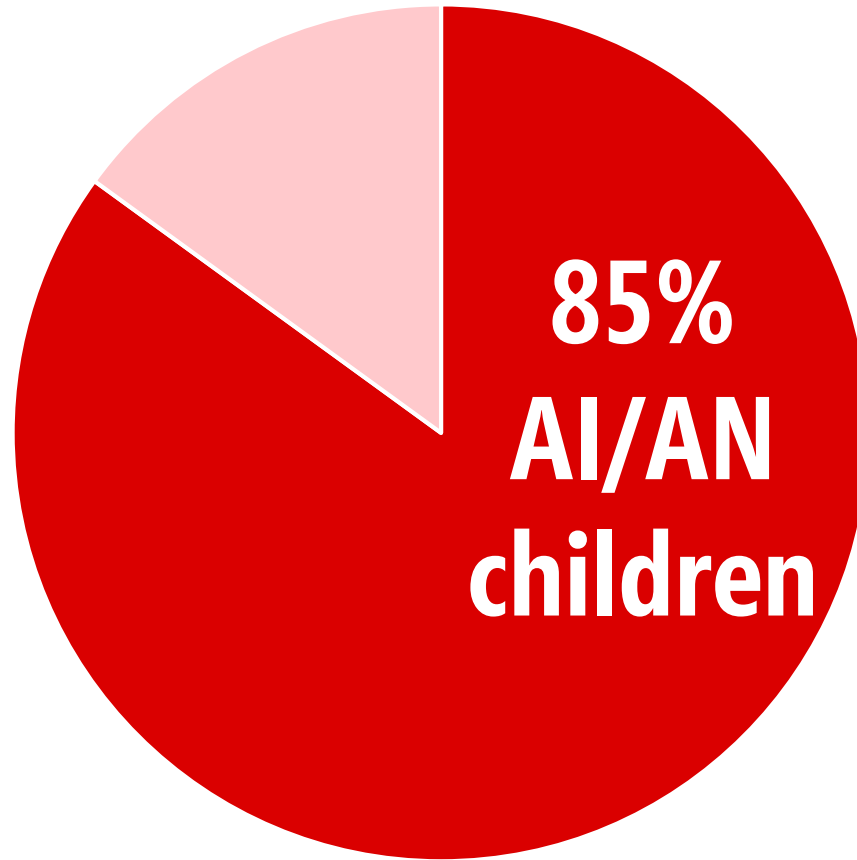


Region XI serves just fewer than $\frac{1}{2}$ of all AI/AN children in Head Start.



Source: Head Start Program Information Report, 2015-2016.

Region XI serves both AI/AN and non-AI/AN children, but the **majority** are AI/AN.



Head Start Family and Child Experiences Survey (FACES)

- The goal of FACES is to describe the children who attend Head Start and their families as well as the programs and staff who serve them. FACES collects data on a nationally representative sample of 3- and 4-year-olds, their families, and the programs they attend.
- Six waves of data collection occurred from 1997 through 2018. Children were sampled from programs and centers in the 50 states and the District of Columbia. Some data from the 2009 cohort are also included.



What is the American Indian and Alaska Native (AI/AN) FACES 2015?

- Until 2015, FACES did not include programs operated in Region XI Head Start.
- Reasons Region XI was not part of FACES include:
 - Tribal concerns about research
 - Unique protocols for research involving sovereign tribal nations
 - Planning and implementing research according to best practices for research with tribal communities is resource intensive



The AI/AN FACES Workgroup was formed in 2013 to help guide the study according to best practices for research with AI/AN communities.



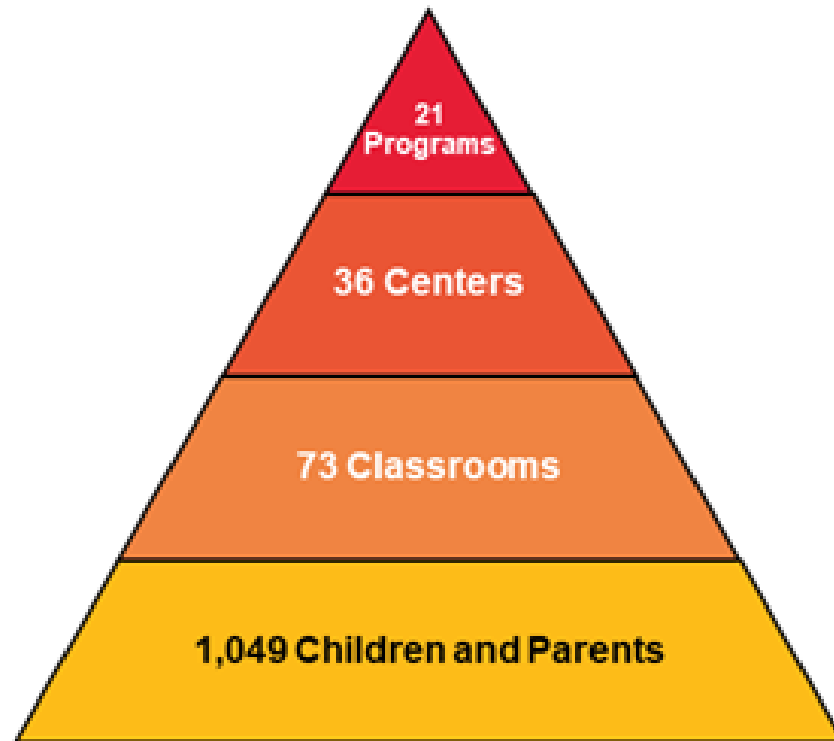
- The Workgroup members advised on the study design and implementation and the dissemination of study findings.
- The Workgroup members worked to ensure that Region XI priorities were at the forefront.

AI/AN FACES 2015 meets a call from program leaders for national data on Region XI, with Native voices at the forefront.



- AI/AN FACES 2015 was informed by members of a workgroup on the design, implementation, and dissemination of the study.
- This advice aligned with cultural and community values and practices.

During the 2015-2016 program year, 21 Region XI Head Start programs were randomly selected and agreed to participate.



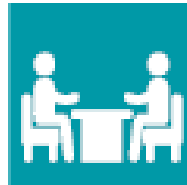
Protocols for tribal review and approval were followed in each community.

Data were gathered in the fall and spring from parents, teachers, directors, and children.



Surveys

- Fall and spring parent surveys
- Spring director surveys
- Spring teacher surveys



Child Assessments

- Fall and spring one-on-one assessments of children's cognitive, social-emotional, and physical development



Teacher Child Report

- Fall and spring teacher report of children's social-emotional development and developmental needs



Observations

- Spring observations of classroom experiences, teacher-child interactions, Native culture and language experiences

Data for this slide deck only include information from the spring teacher and director surveys. Other data not reported in this slide deck, is available in other resources found at:

<https://www.acf.hhs.gov/opre/research/project/american-indian-and-alaska-native-head-start-family-and-child-experiences-survey-faces>

How does AI/AN FACES 2015 differ from FACES 2014?

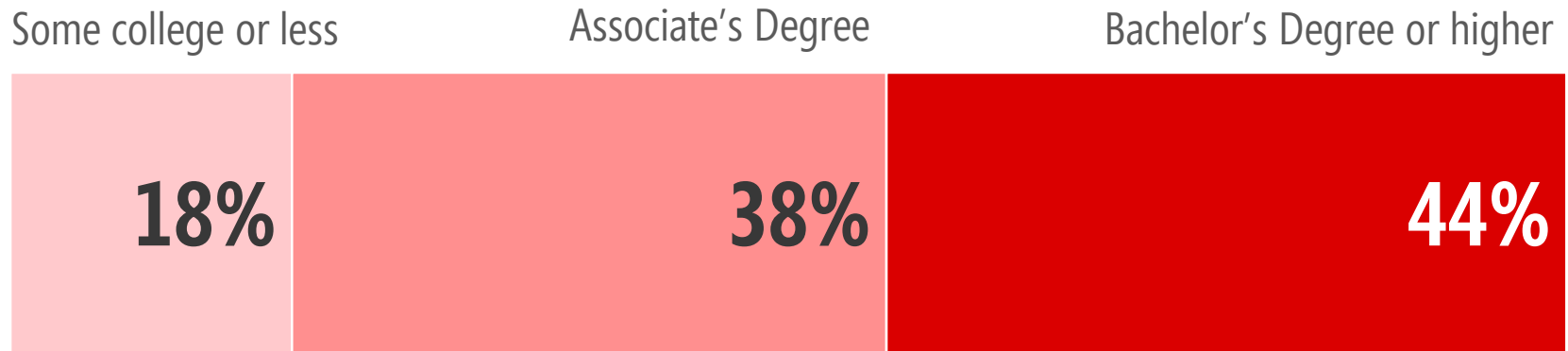
- AI/AN FACES 2015 is nationally representative of Region XI Head Start children, families, and programs
 - FACES 2014 is nationally representative of Regions I-X Head Start
- However, AI/AN FACES 2015 is only designed to support estimates at the **child and family level**
 - All findings should be considered in the context of the child or family
 - Examples:
 - What the data **can** say: XX% of Region XI HS children's teachers....
 - What the data **cannot** say: XX% of Region XI HS teachers...
- AIAN FACES 2015 used FACES 2014 as model, but had to decide whether to:
 - Align
 - Adapt
 - Add



Findings



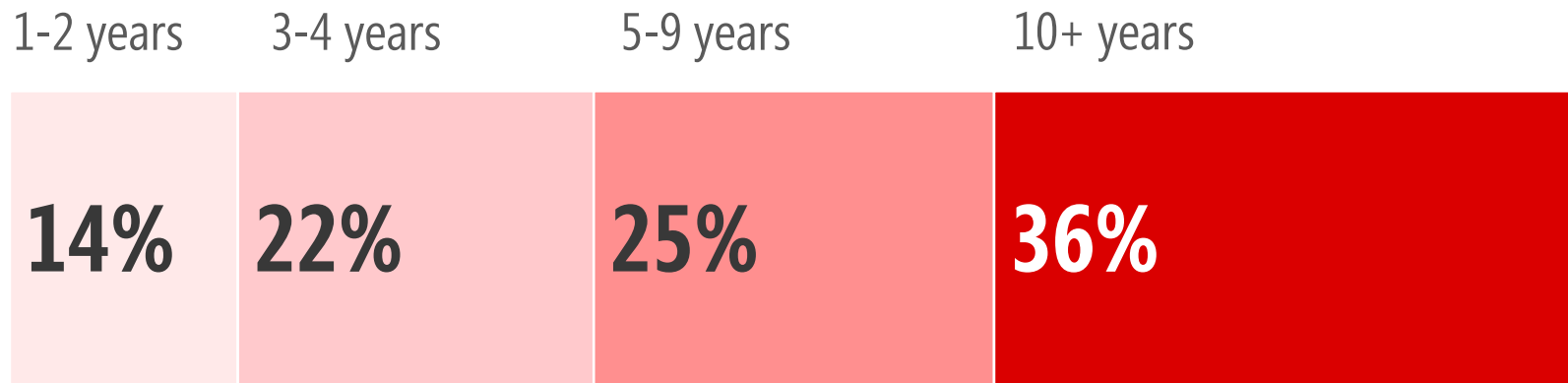
Almost ½ of Region XI Head Start children's lead teachers have a Bachelor's degree or higher.



Source: AI/AN FACES Spring 2016 Teacher Survey, Table F.6.

Note: Statistics are weighted to represent all children enrolled in Region XI Head Start in fall 2015 and who were still enrolled in spring 2016. Percentages may not sum to 100 percent due to rounding.

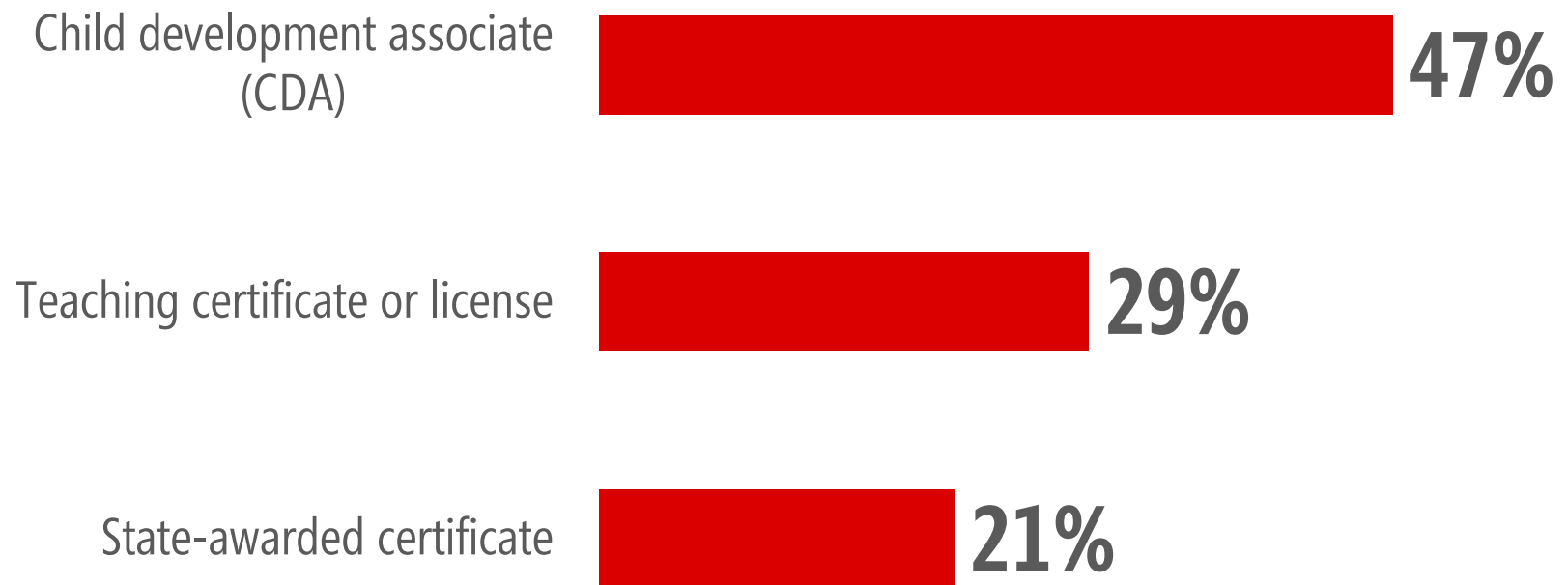
More than 1/3 of Region XI Head Start children have a lead teacher who has taught in Head Start/Early Head Start for 10 years or more.



Source: AI/AN FACES Spring 2016 Teacher Survey, Table F.6.

Note: Statistics are weighted to represent all children enrolled in Region XI Head Start in fall 2015 and who were still enrolled in spring 2016. Percentages may not sum to 100 percent due to rounding.

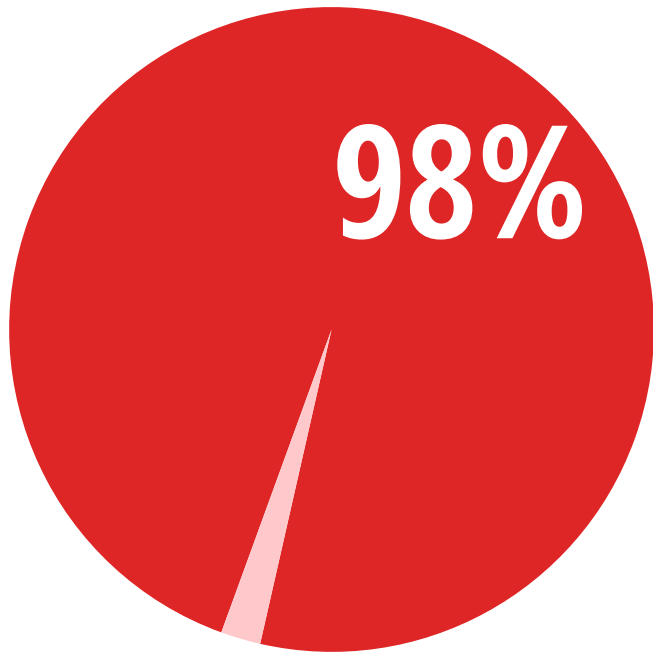
Almost ½ of Region XI Head Start children's lead teachers have a specialized certificate in early childhood.



Source: AI/AN FACES Spring 2016 Teacher Survey, Table F.6.

Note: Statistics are weighted to represent all children enrolled in Region XI Head Start in fall 2015 and who were still enrolled in spring 2016.

Percentages may not sum to 100 percent due to rounding.

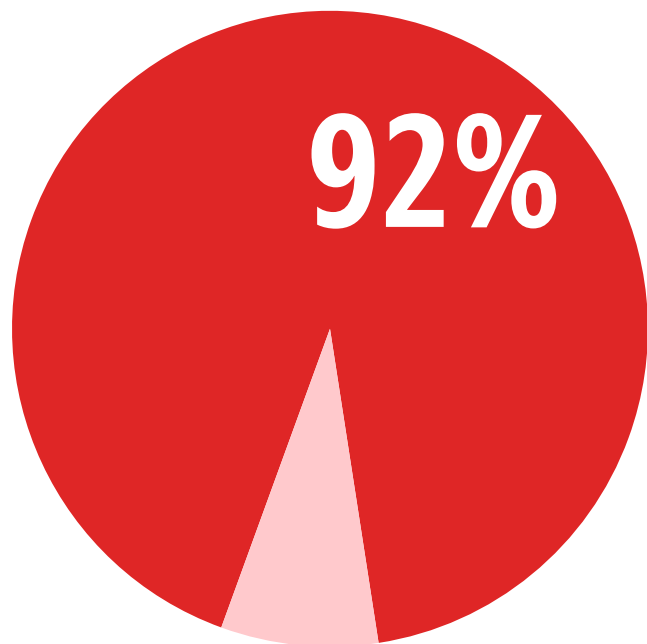


of Region XI Head Start children's teachers believe they are making a difference in the lives of the children they teach.

Source: AI/AN FACES Spring 2016 Teacher Survey, Table F.9.

Note: Statistics are weighted to represent all children enrolled in Region XI Head Start in fall 2015 and who were still enrolled in spring 2016. Percentages do not sum to 100 percent due to rounding. There are 71 teachers who completed a teacher survey. This percentage reflects teachers who agree or strongly agree with this item.

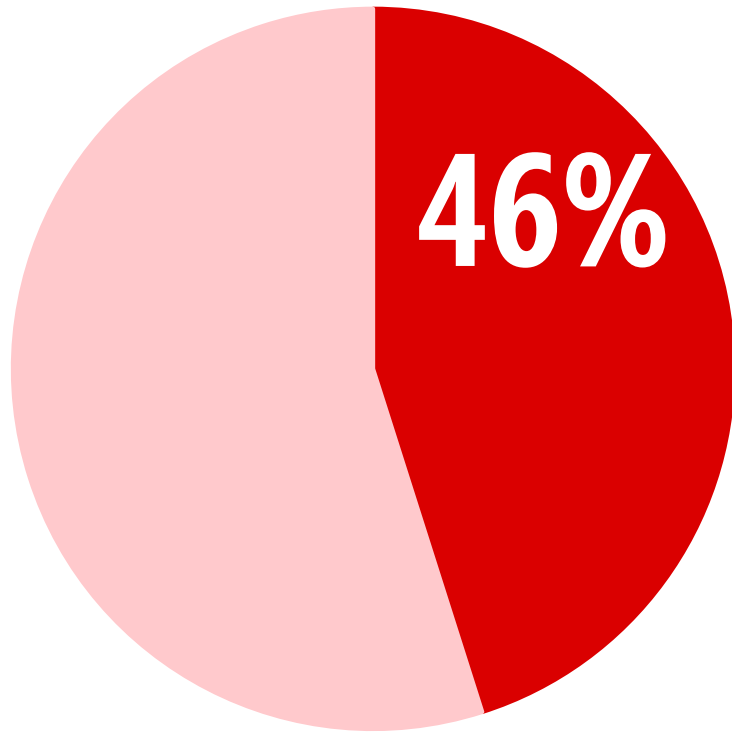




of Region XI Head Start children's teachers enjoy their present teaching job.

Source: AI/AN FACES Spring 2016 Teacher Survey, Table F.9.

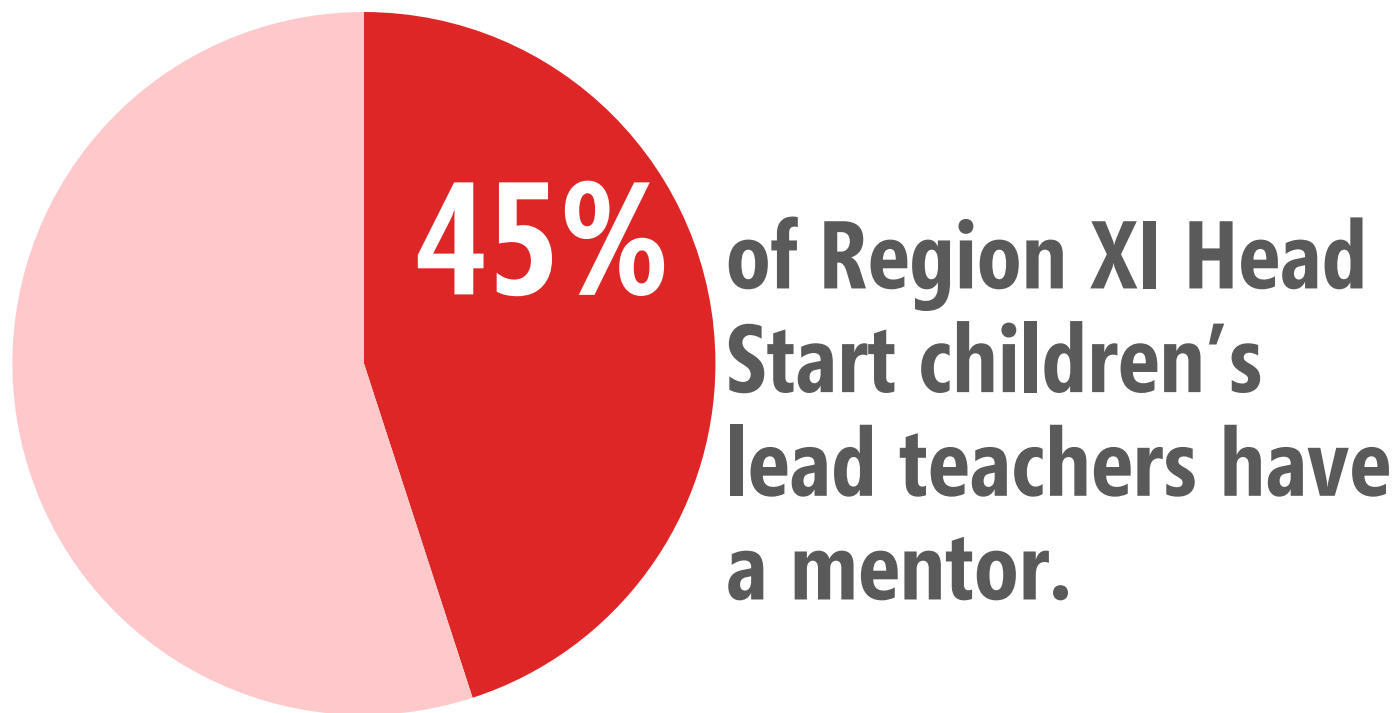
Note: Statistics are weighted to represent all children enrolled in Region XI Head Start in fall 2015 and who were still enrolled in spring 2016. Percentages do not sum to 100 percent due to rounding. There are 71 teachers who completed a teacher survey. This percentage reflects teachers who agree or strongly agree with this item.



of Region XI Head Start children's teachers report that a cultural/language elder or specialist is available for classrooms.

Source: Spring 2016 AI/AN FACES Teacher Survey, Table E.6.

Note: Statistics are weighted to represent all children enrolled in Region XI Head Start programs in fall 2015 and who were still enrolled in spring 2016.



Source: AI/AN FACES Spring 2016 Teacher Survey, Table F.7.

Note: Statistics are weighted to represent all children enrolled in Region XI Head Start in fall 2015 and who were still enrolled in spring 2016. Percentages do not sum to 100 percent due to rounding. There are 71 teachers who completed a teacher survey.

Region XI Head Start children's teachers are offered a variety of professional development supports.



Source: Spring 2016 AI/AN FACES Center Directory Survey, Table G.4.

Note: Statistics are weighted to represent all children enrolled in Region XI Head Start in fall 2015 and who were still enrolled in spring 2016. There are 35 center directors who completed a center directory survey.

For more information

- To learn more about the study and study reports, see the AI/AN FACES study page on the ACF website:
 - <https://www.acf.hhs.gov/opre/research/project/american-indian-and-alaska-native-head-start-family-and-child-experiences-survey-faces>
- To learn more about the data and apply for access, see the AI/AN FACES 2015 study page on the Research Connections:
 - <https://www.icpsr.umich.edu/icpsrweb/ICPSR/studies/36804>



Additional support for questions

- Questions about creating an AI/AN FACES 2015 research plan and submitting the plan to the AIAN FACES OPRE Data Team:
 - AIAN_OPRE_Data@acf.hhs.gov
- Questions about the data:
 - faces-aianfaces-help@mathematica-mpr.com



AI/AN FACES 2015 Contacts

- Meryl Barofsky
 - Meryl.Barofsky@acf.hhs.gov
- Laura Hoard
 - Laura.Hoard@acf.hhs.gov
- Lizabeth Malone
 - Lmalone@mathematica-mpr.com
- Sara Bernstein
 - Sbernstein@mathematica-mpr.com



These slides were prepared by Allison Walker, a Contract Associate Analyst to the Office of Planning, Research, and Evaluation (OPRE) with Business Strategy Consultants.

This brief relies on data collected and analyzed as part of the AIAN FACES 2015 Study conducted by Mathematica Policy Research. The ACF Project Officers are Meryl Barofsky and Laura Hoard.

For additional information visit: <https://www.acf.hhs.gov/opre/resource/descriptive-data-on-region-xi-head-start-children-and-families-ai-an-faces-fall-2015spring-2016-data-tables-and-study-design>

This brief is in the public domain. Permission to reproduce is not necessary.

Suggested citation: Walker, A. (2020). *American Indian and Alaska Native Head Start Family and Child Experiences Survey 2015: Educational and Professional Development of Lead Teachers*, OPRE Report #2020-91, Washington, DC: Office of Planning, Research and Evaluation, Administration for Children and Families, U.S. Department of Health and Human Services.

Other reports sponsored by the Office of Planning, Research and Evaluation are available at www.acf.hhs.gov/opre.

Disclaimer: The views expressed in this publication do not necessarily reflect the views or policies of the Office of Planning, Research and Evaluation, the Administration for Children and Families, or the U.S. Department of Health and Human Services.

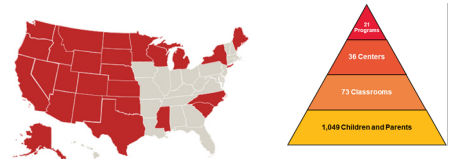


The American Indian & Alaska Native Head Start Family & Child Experiences Survey 2015: Education & Professional Development of Lead Teachers

Allie Walker, Meryl Barofsky, & Laura Hoard

Overview

The American Indian and Alaska Native Head Start Family and Child Experiences Survey 2015 (AI/AN FACES 2015) is the first national descriptive study of children and families enrolled in Head Start programs operated by federally recognized tribes. These programs are known as Region XI. Region XI programs incorporate their unique history, community traditions, and beliefs into their operations and integrate language and culture into the delivery of services to children and families. AI/AN FACES 2015 was informed by members of a workgroup comprised Region XI Head Start directors, researchers from universities and Mathematica Policy Research (which conducted the study), and federal officials from the Administration for Children and Families (which funded the study).



During the 2015-2016 program year, 21 Region XI Head Start programs were randomly selected and agreed to participate.

The red indicates states with Region XI Head Start programs.

Workgroup

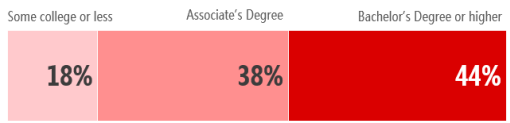
The AI/AN FACES Workgroup was formed in 2013 to help guide the study according to best practices for research with AI/AN communities. The Workgroup members advised on the study design, implementation, and dissemination of the study findings.



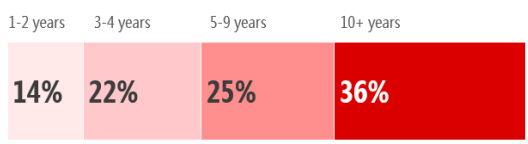
The findings presented here are from the AI/AN FACES Spring 2016 Teacher Survey.

- Number of children's teachers surveyed: 849
- 50% of Region XI Head Start children's teachers identified as AI/AN, alone or in combination with another race or ethnicity.
- The majority (63%) of children's teachers have some connection to the tribe or community.

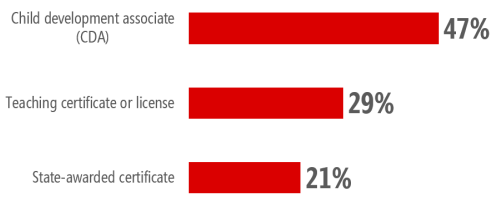
Almost 1/2 of Region XI Head Start children's lead teachers have a Bachelor's degree or higher.



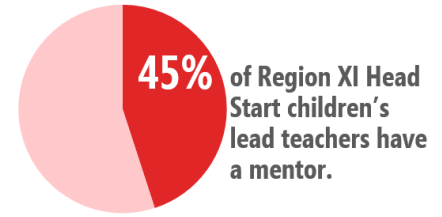
More than 1/3 of Region XI Head Start children have a lead teacher who has taught in Head Start/Early Head Start for 10 years or more.



Almost 1/2 of Region XI Head Start children's lead teachers have a specialized certificate in early childhood.



Region XI Head Start children's teachers are offered a variety of professional development supports.



Contacts and Further Details

Allie Walker Allison.Walker@acf.hhs.gov
 Meryl Barofsky Meryl.Barofsky@acf.hhs.gov
 Laura Hoard Laura.Hoard@acf.hhs.gov

For more information about AI/AN FACES 2015, please see the OPRE website for reports and briefs. Scan the QR code with your phone's camera to be taken to the study page.



	@OPRE_ACF
	@OPRE.ACF
	@opre_acf
	/opreacf

